

New Jersey Turnpike Authority

December 2008

New Jersey Turnpike Interchange 6 to 9 Widening Program

Presented by

John M. Keller, P.E. and J. Lawrence Williams, P.E.



NJ
Turnpike

Interchange **6 to 9**



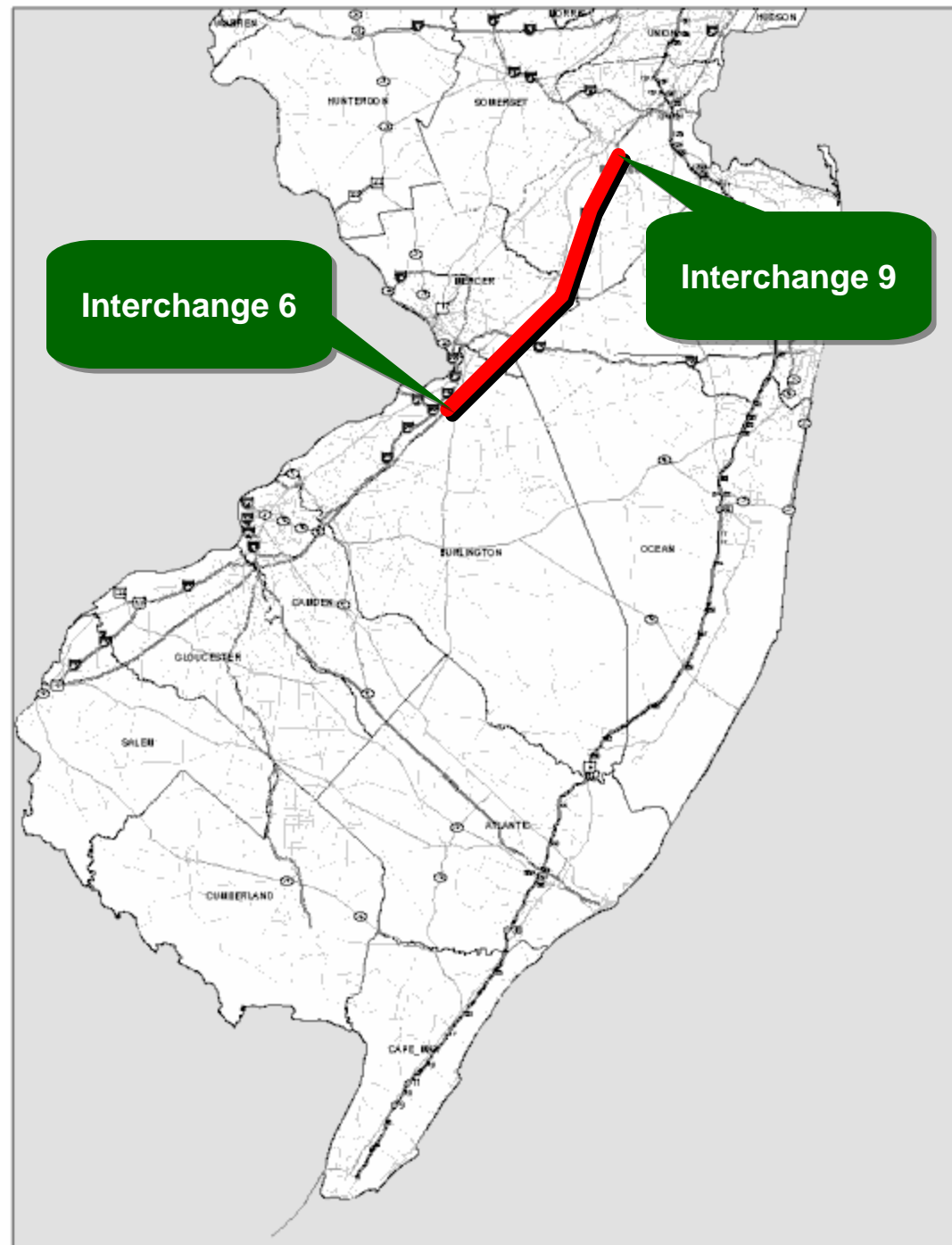
Widening Program

Interchange 6 to 9 Widening Program

- Program Overview
- Program Schedule
- Major Design Elements
- Project Challenges
 - Right Of Way
 - Utilities
 - Permitting
 - Public Outreach
- Construction Contracts
 - Construction Management and Inspection
 - Construction Contractors
 - Overview of Program Construction Contracts
- Questions and Answers

Interchange 6 to 9 Widening Program

Program Overview



Interchange 6 to 9 Widening Program

- Overview
- Proposed 12 lane dual-dual roadway
 - ▶ Interchange 6 to 8A (MP 48 – MP 73)
 - Existing 6-lane roadway
 - Widen with a new 3-lane roadway in each direction
 - ▶ Interchange 8A to 9 (MP 73 – MP 83)
 - Existing 10 lane dual-dual roadway segment
 - Widen by one lane in each direction
- \$2.7 Billion
- 170 Lane Miles
- 100 Structures



Interchange 6 to 9

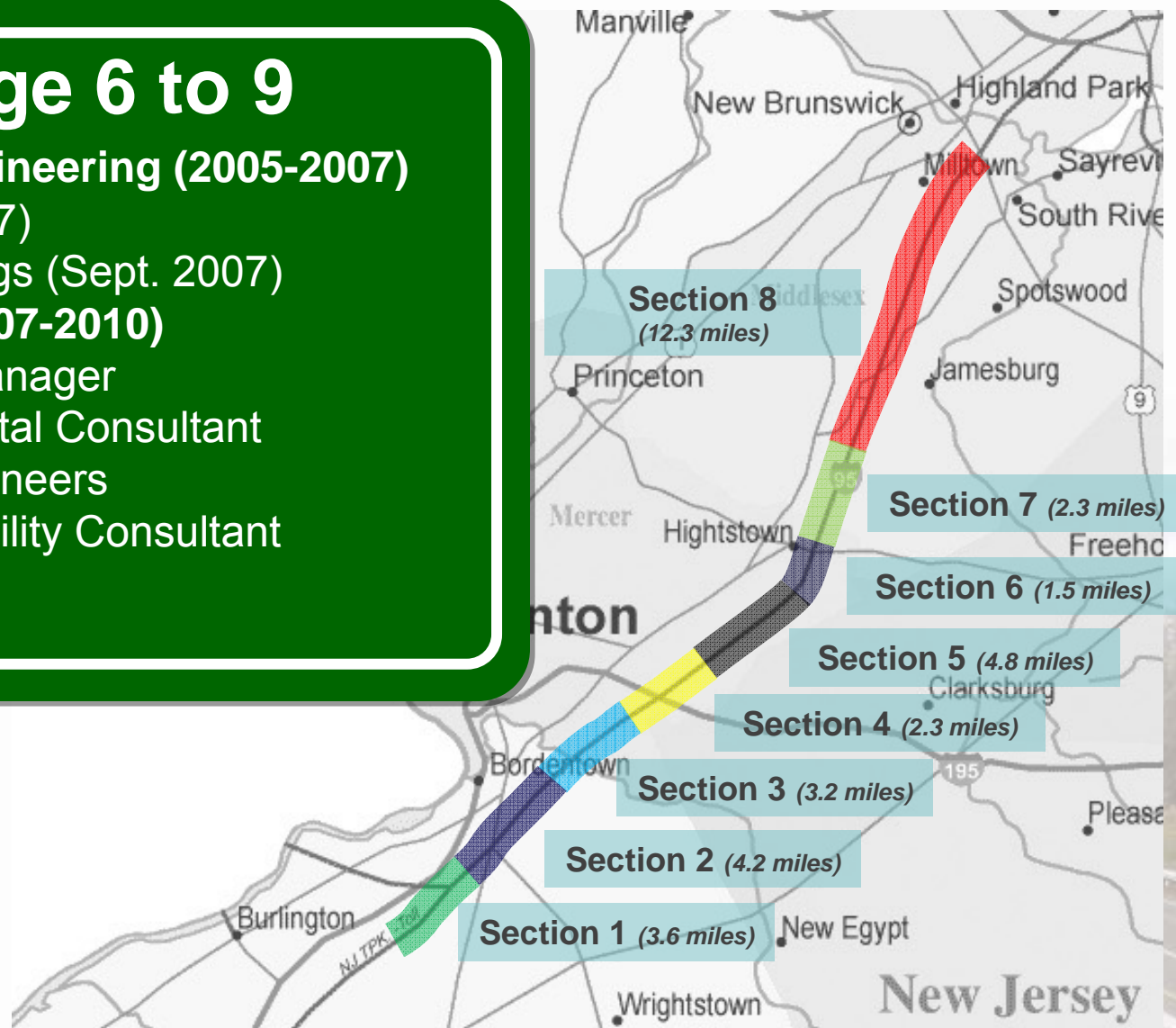
Preliminary Engineering (2005-2007)

- EIS (Jan. 2007)
- Public Hearings (Sept. 2007)

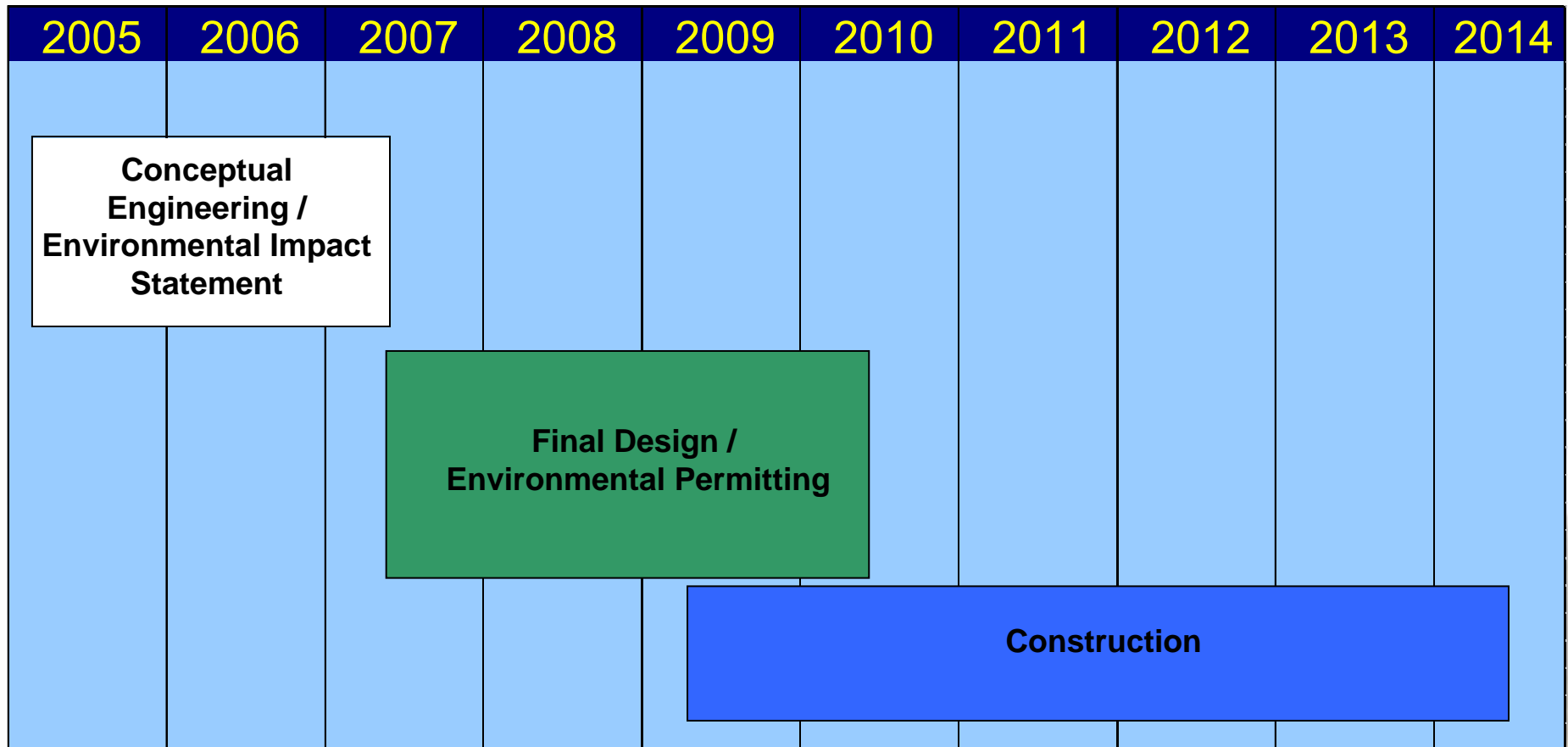
Final Design (2007-2010)

- 1 Program Manager
- 1 Environmental Consultant
- 8 Design Engineers
- 1 Constructability Consultant

Construction

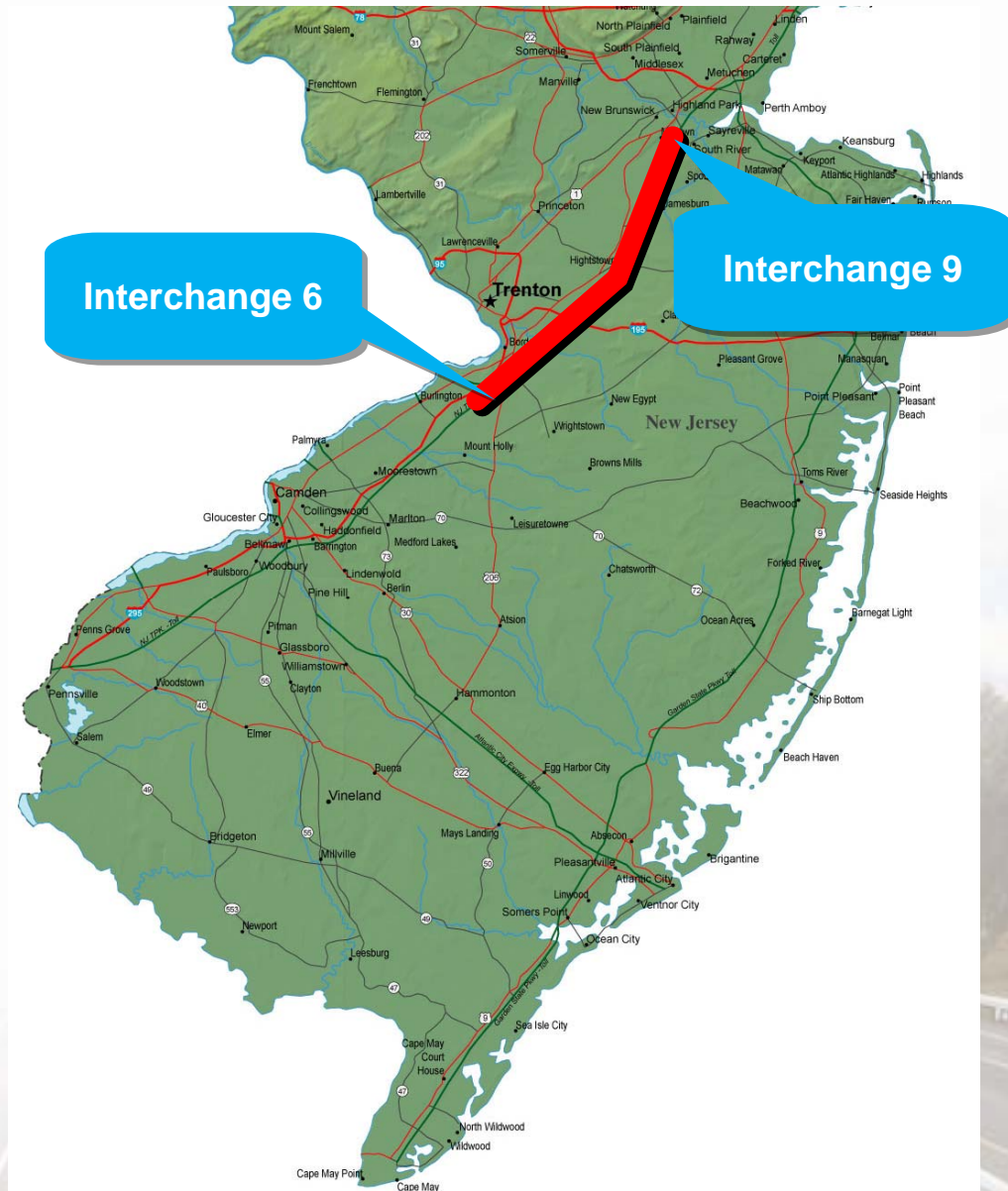


Program Schedule

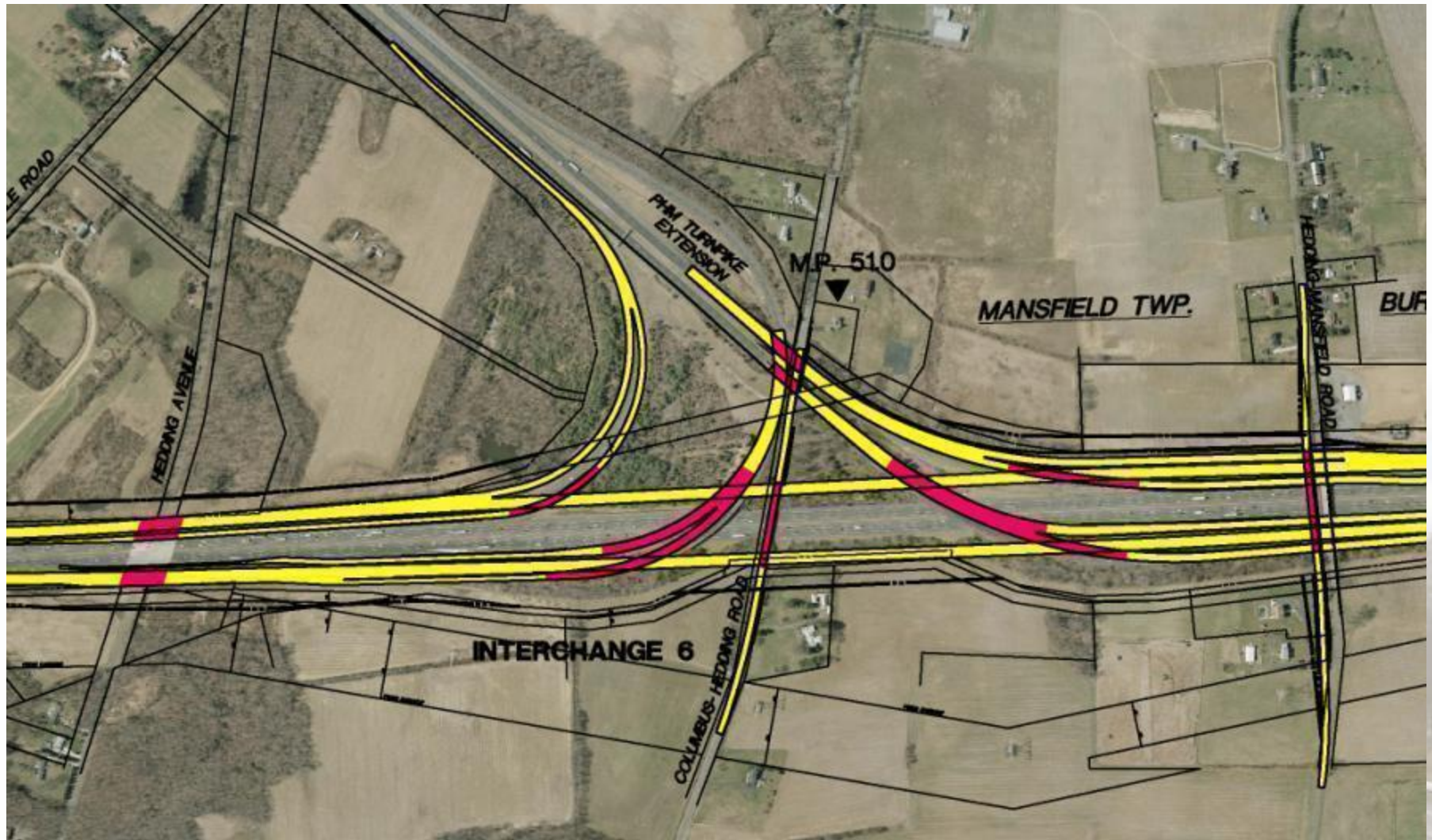


Interchange 6 to 9 Widening

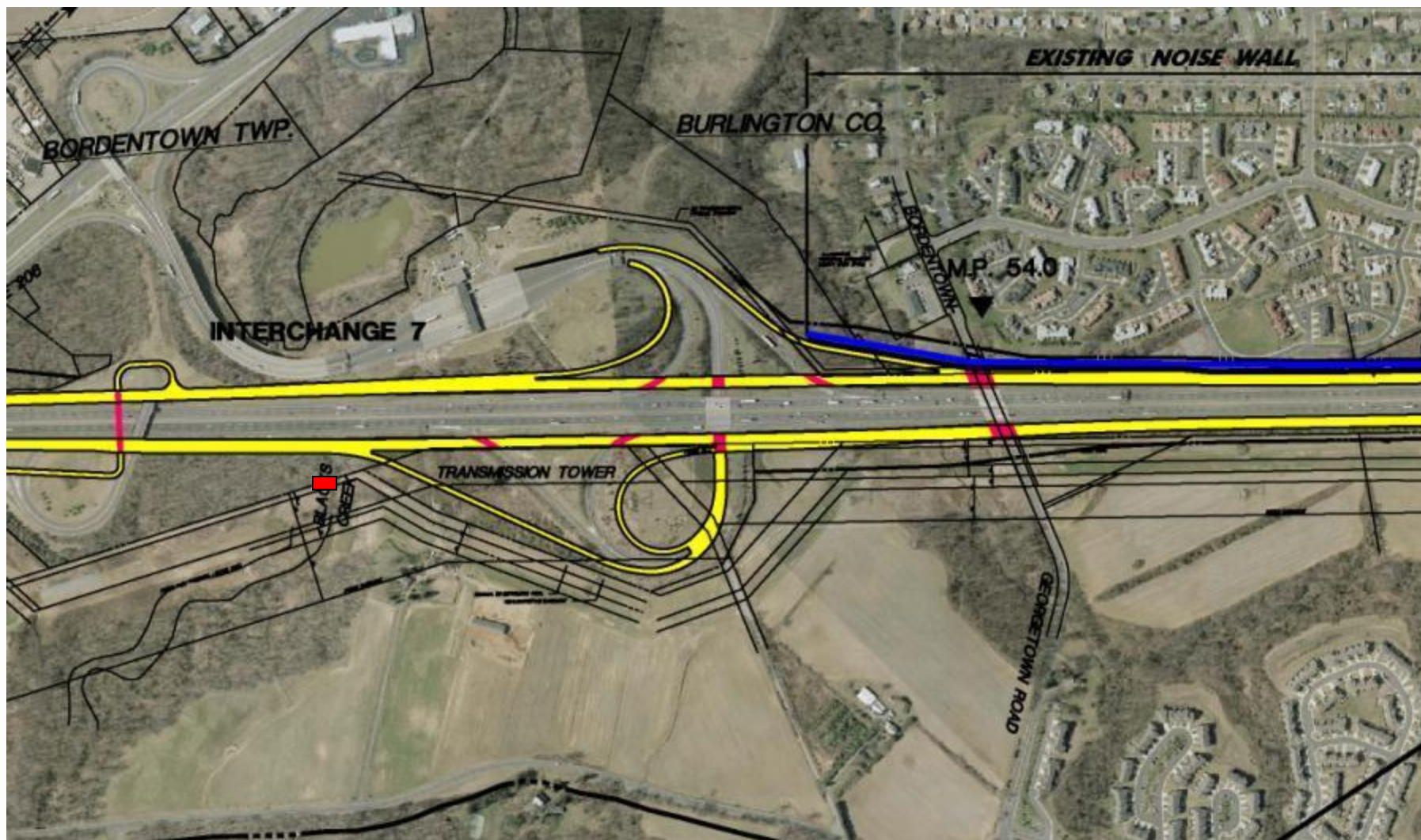
Major Design Elements



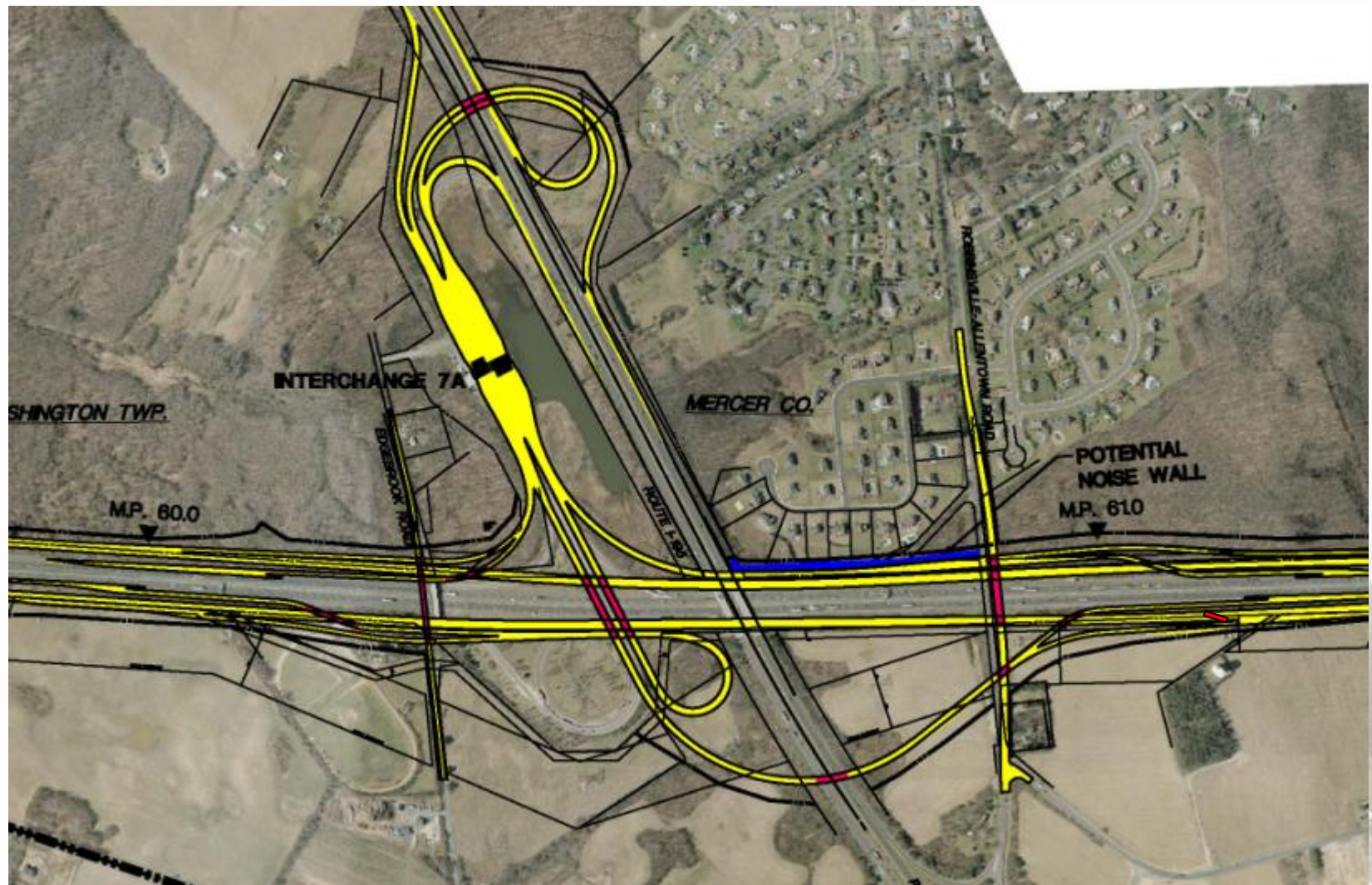
Interchange 6



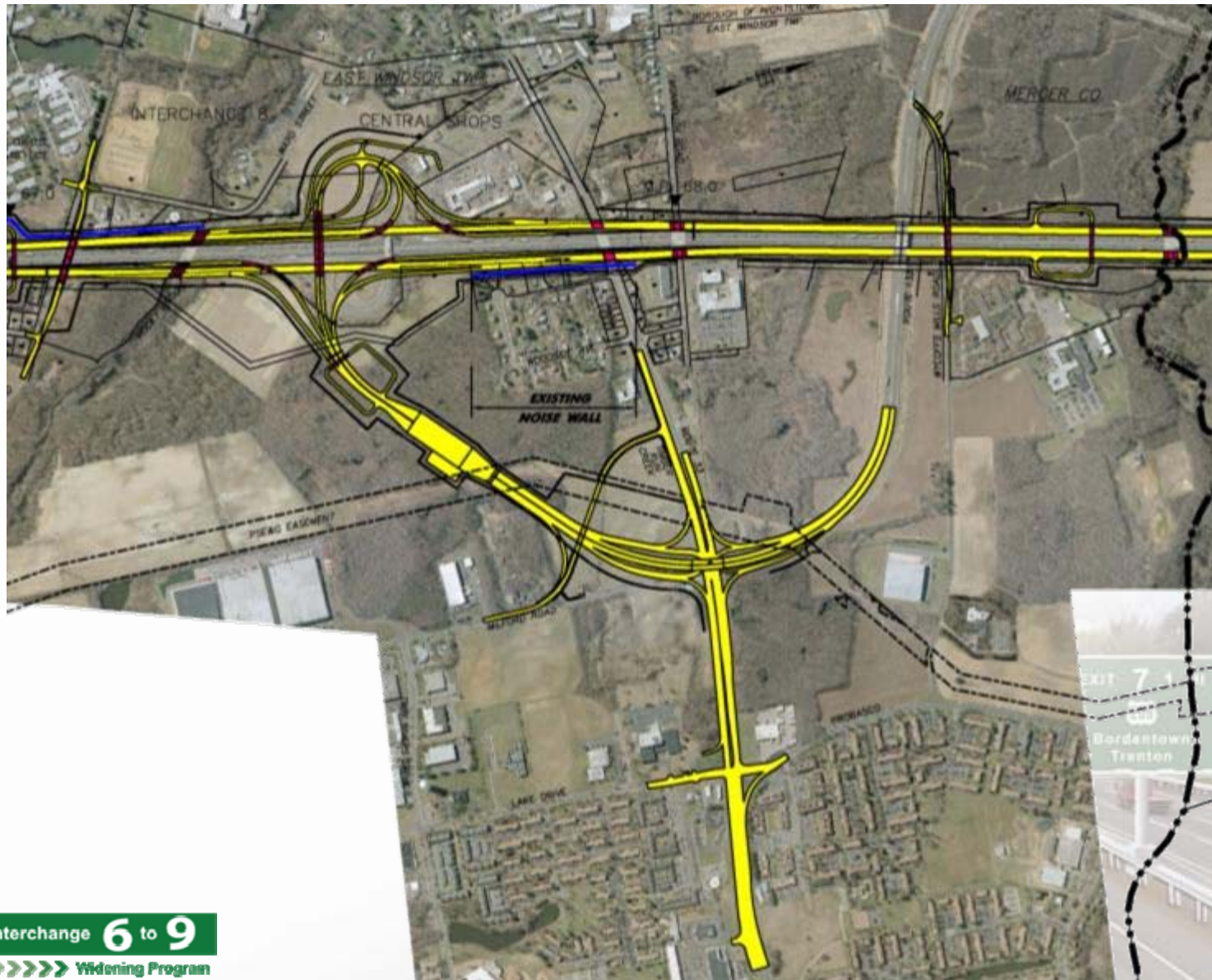
Interchange 7



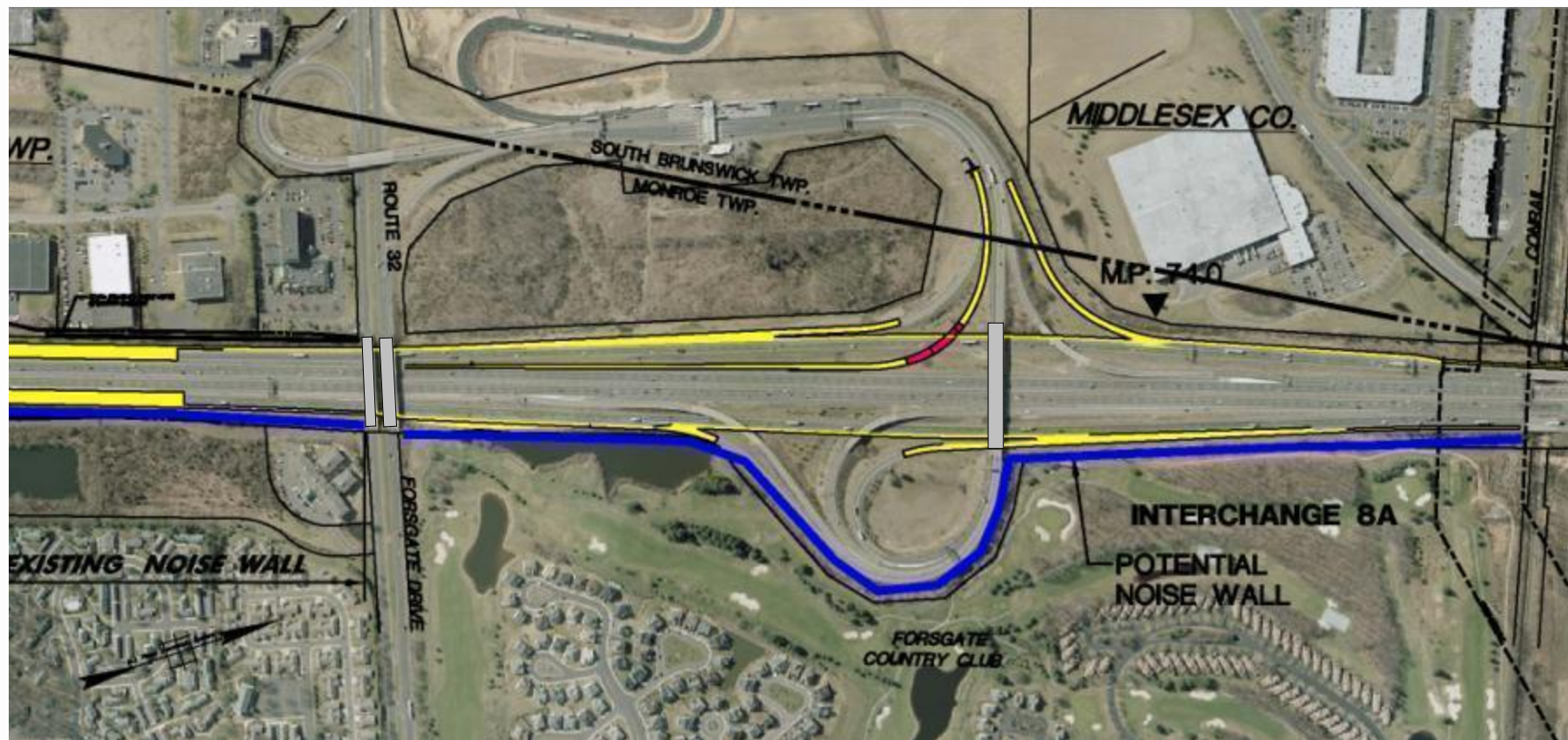
Interchange 7A



Interchange 8



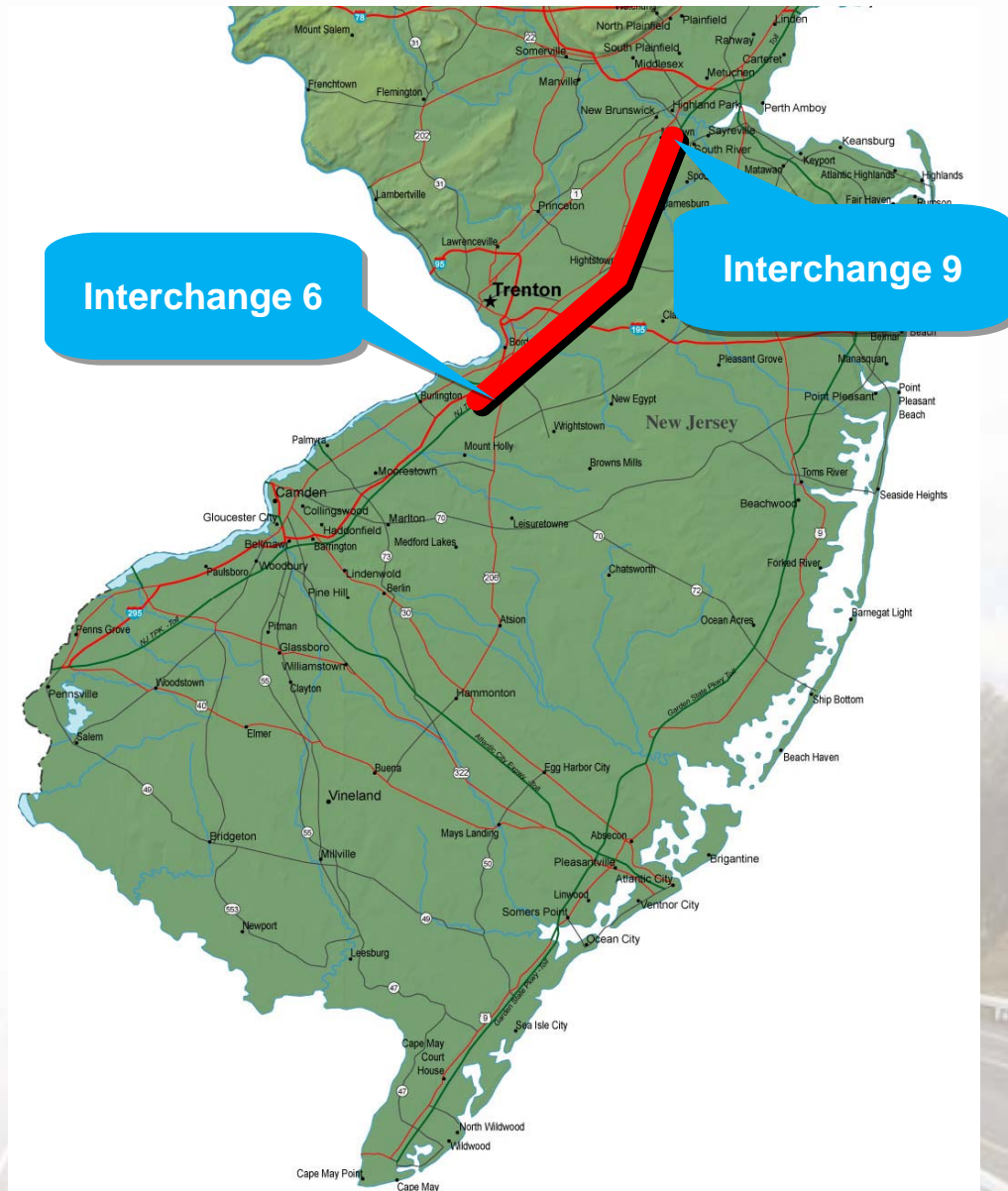
Interchange 8A



Interchange 6 to 9 Widening

Program Challenges

- ROW
- Utilities
- Permitting
- Public Outreach



Interchange 6 to 9 Widening

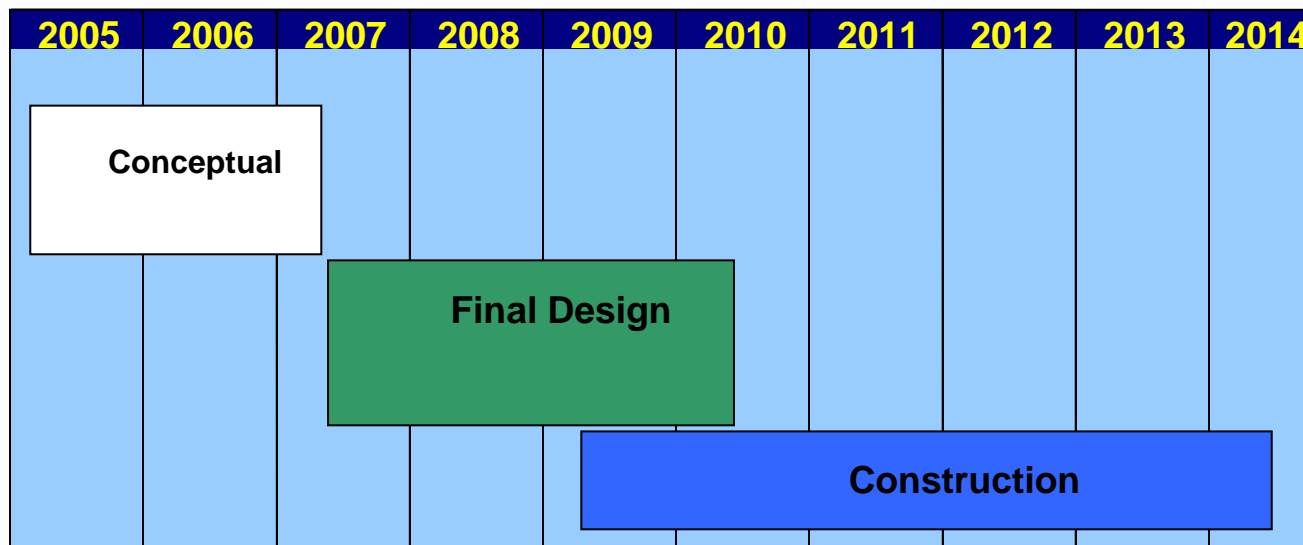
Construction



Construction

- Construction Management and Inspection
- Construction Contractors
- Overview of Program Construction Contracts

Overall Program Schedule



Construction Management and Inspection

- **Final Design is Comprised of Eight (8) Design Sections 1 - 8**
- **Construction Oversight – Three (3) Firms**
 - ▶ Order for Professional Services No. T3200
*Construction Management and Inspection Services Mainline
Program Wide Construction Management - Sections 1 - 8
Inspection Services – Sections 1, 2, 3, 5, 7 and 8*
 - ▶ Order for Professional Services No. T3201
Supervision of Construction Services for Section 4 - Interchange 7A
 - ▶ Order for Professional Services No. T3202
Supervision of Construction Services for Section 6 - Interchange 8

Construction Contractors

- **Prequalification:** www.state.nj.us/turnpike - Business Center

- **Classifications:**

1. Grading and Drainage
2. Paving
3. General Construction, Highway
4. Bridge Structures
5. Heavy Highway

- **Ratings:**

- F. up to \$5 Million
- G. up to \$10 Million
- H. Unlimited



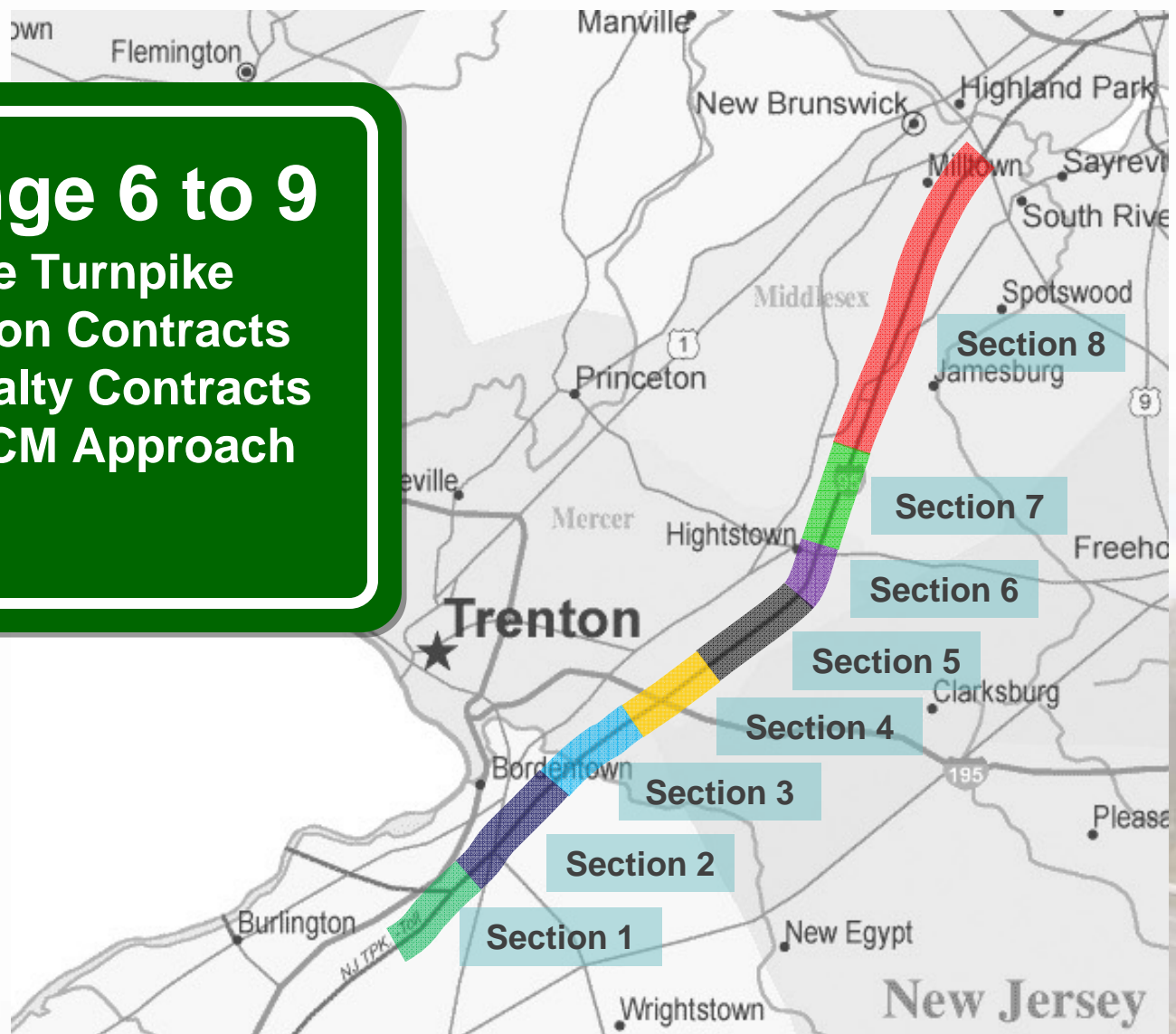
Overview of Program Construction Contracts

- **Total Construction Cost - \$2.0 Billion**
- **Owner Controlled Insurance Program**
- **Small Business Enterprise Participation – 25% (Good Faith Effort)**
- **Early Activities: Utility Relocations**
 - Fiber Optic Relocations
 - Pipeline Relocations
- **Contracts:**
 - Award 26 Construction Contracts
 - 9 in 2009 - \$ 345,000,000
 - 15 in 2010 - \$1,470,000,000
 - 2 in 2011 - \$ 185,000,000
 - Award Up to 6 Specialty Contracts
- **Range: \$5 Million to \$210 Million**
- **Schedule: Mid 2009 to Mid 2014**



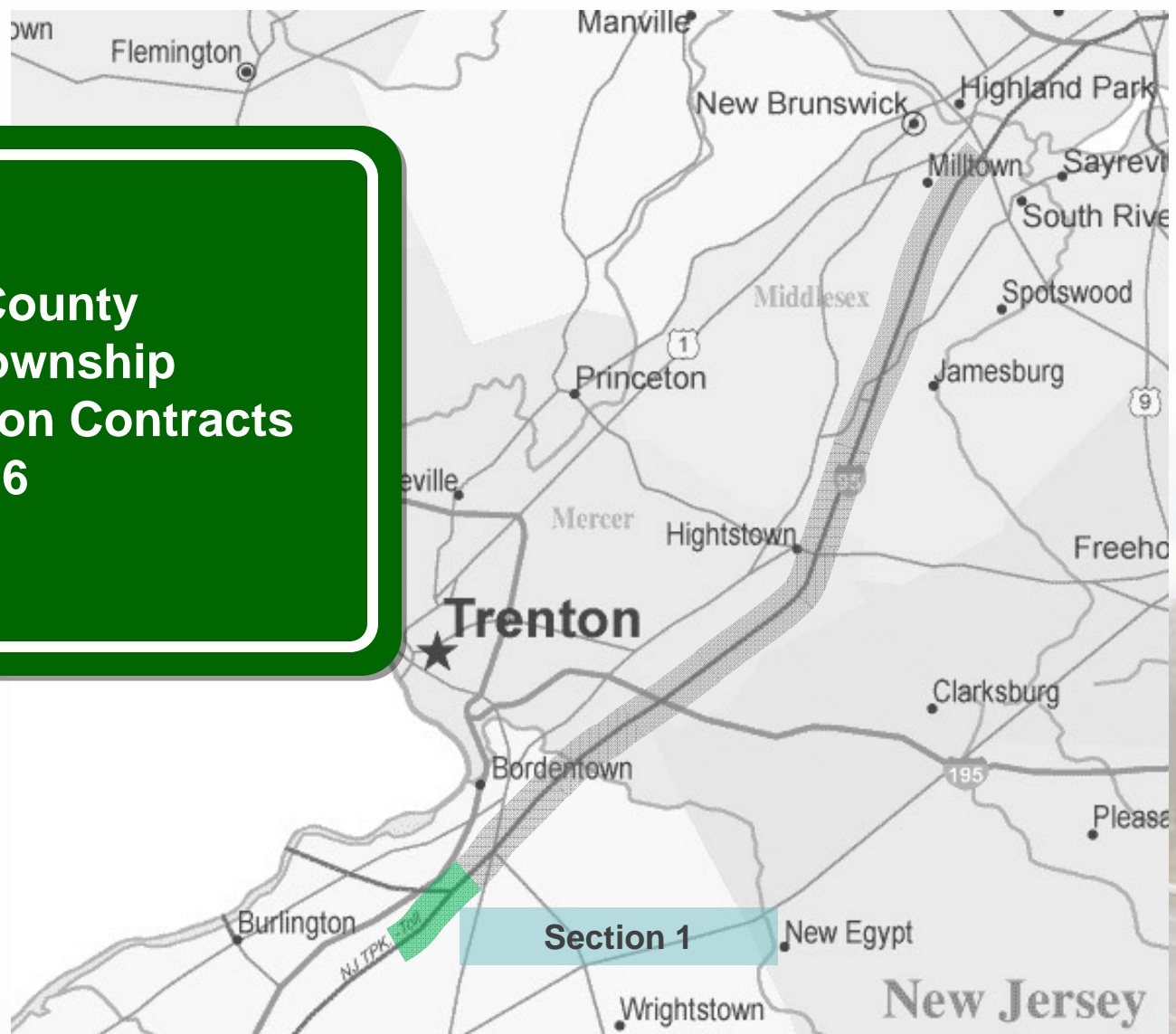
Interchange 6 to 9

35 Miles of the Turnpike
26 Construction Contracts
Up to 6 Specialty Contracts
Coordinated CM Approach



Section 1

- Burlington County
- Mansfield Township
- 3 Construction Contracts
- Interchange 6



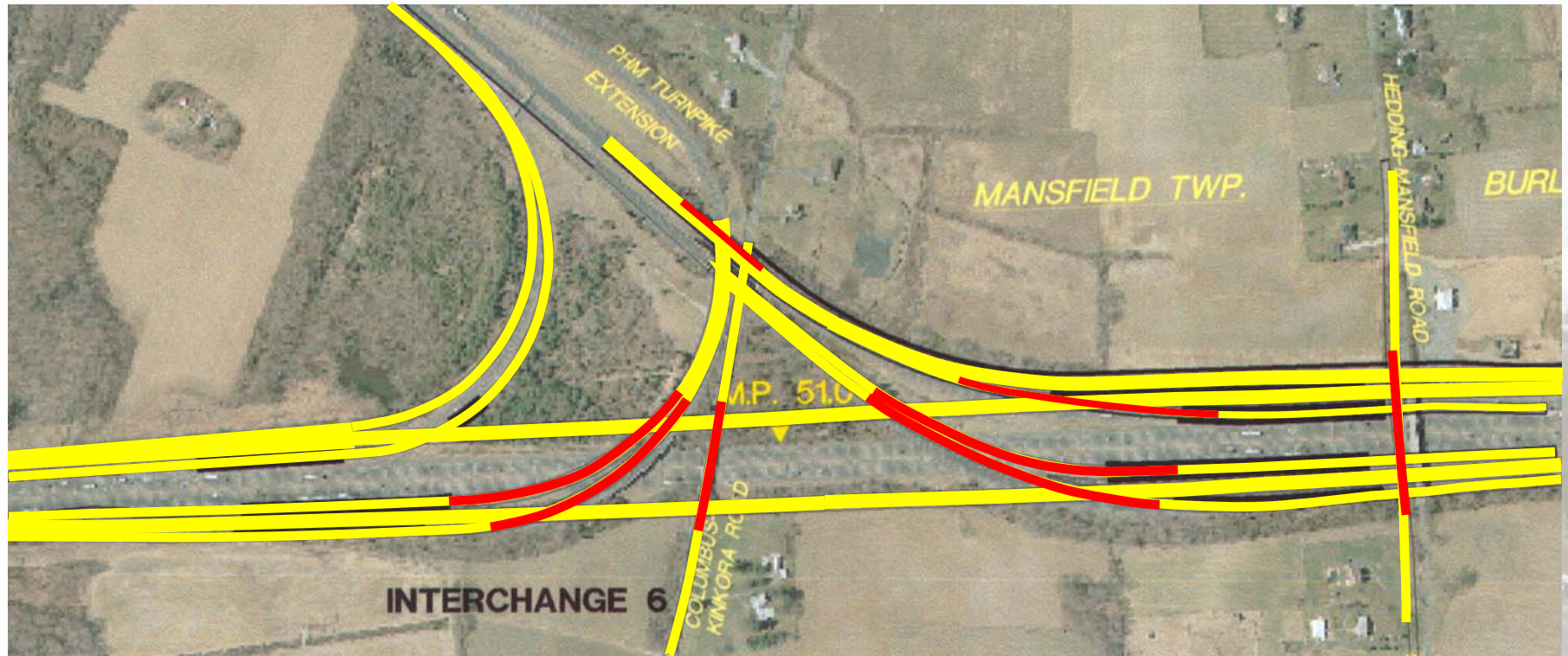
Contract T869.120.102

- 1.1 Miles
- Cost: \$80 million
- Duration: 30 months
- Advertise/Bid: 1Q 2010
- 2 Local Road Bridges over TPK
- 2 Mainline Bridge Structures
- 2 Culvert Structures
- 75,000 SF of Retaining Wall
- 480,000 CY of Earthwork



Contract T869.120.103

- 1.7 Miles
- Cost: \$210 million
- Duration: 48 months
- Advertise/Bid: 1Q 2010
- Interchange 6 (6 Ramps)
- 2 Local Rd. Bridges over TPK
- 200,000 SF of Retaining Wall
- 700,000 CY of Earthwork
 - Soil Consolidation



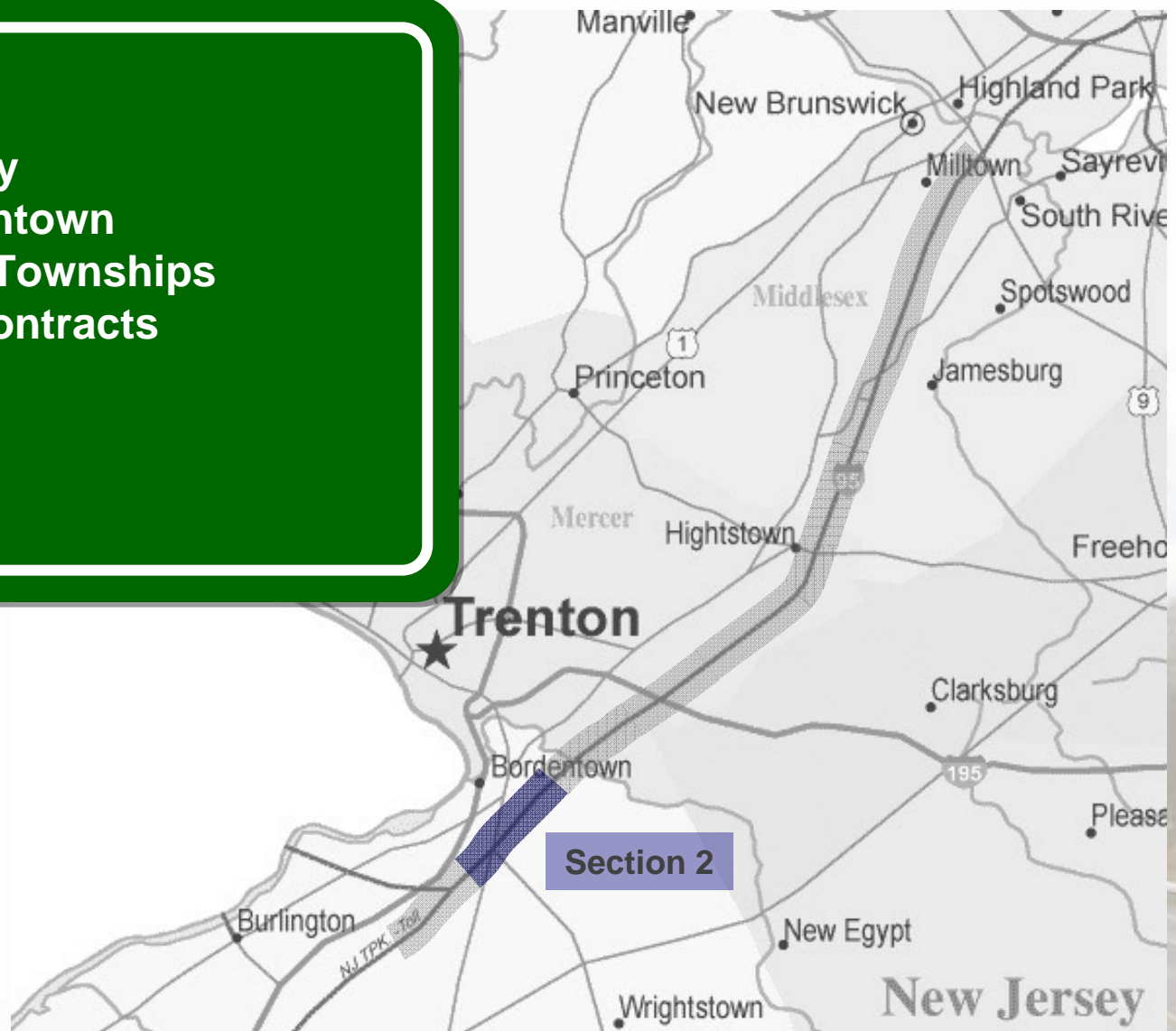
Contract T869.120.101

- 0.7 Miles
- Cost: \$30 million
- Duration: 24 months
- Advertise/Bid: 2Q 2009
- 2 Culvert Extensions
- 26,000 SF of Retaining wall
- 150,000 CY of Earthwork
 - Soil consolidation



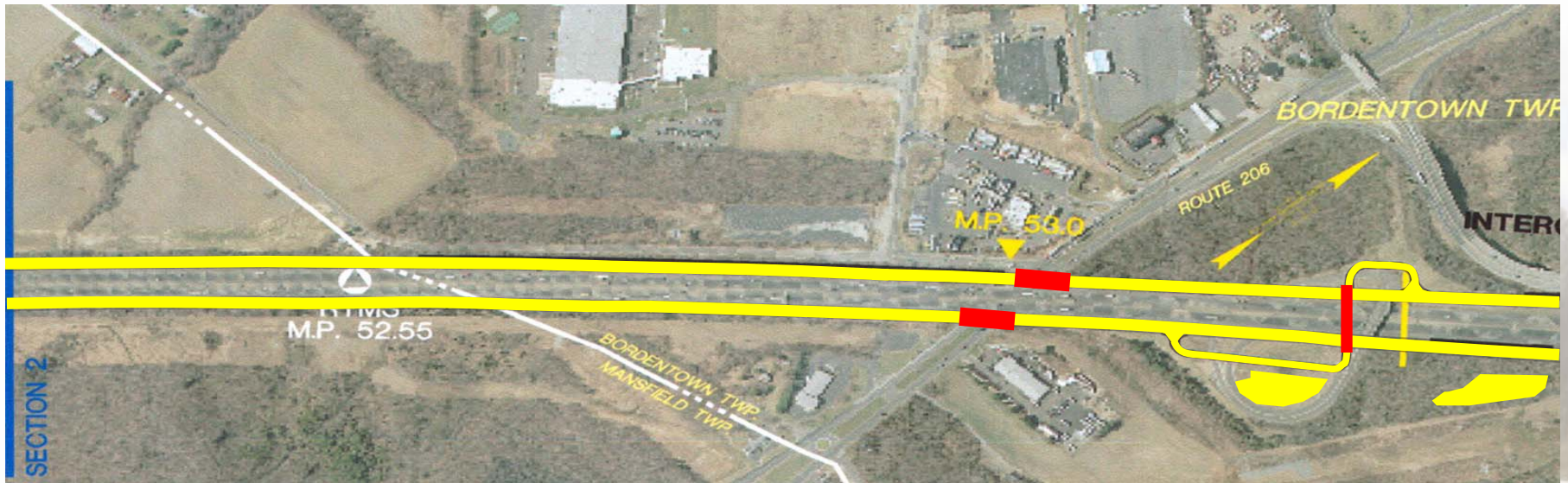
Section 2

- Burlington County
- Mansfield, Bordentown & Chesterfield Townships
- 3 Construction Contracts
- Interchange 7



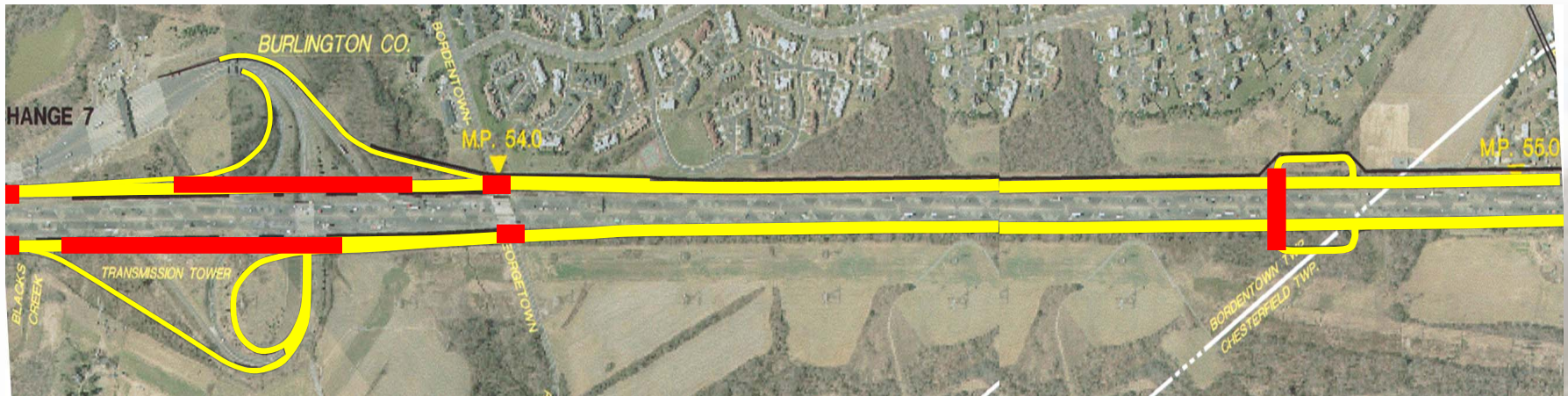
Contract T869.120.201

- 1.2 Miles
- Cost: \$80 million
- Duration: 30 months
- Advertise/Bid: 2Q 2009
- 1 U-Turn over TPK
- 2 Mainline Bridge Structure
- 125,000 SF of Retaining wall
- 330,000 CY of Earthwork
 - Soil consolidation



Contract T869.120.203

- 1.6 Miles
- Cost: \$180 million
- Duration: 48 months
- Advertise/Bid: 3Q 2010
- Interchange 7 (4 new Ramps)
- 4 Mainline Bridge Structures
- 2 Culvert Extensions
- 1 U Turn
- 135,000 SF of Retaining Wall
- 620,000 CY of Earthwork



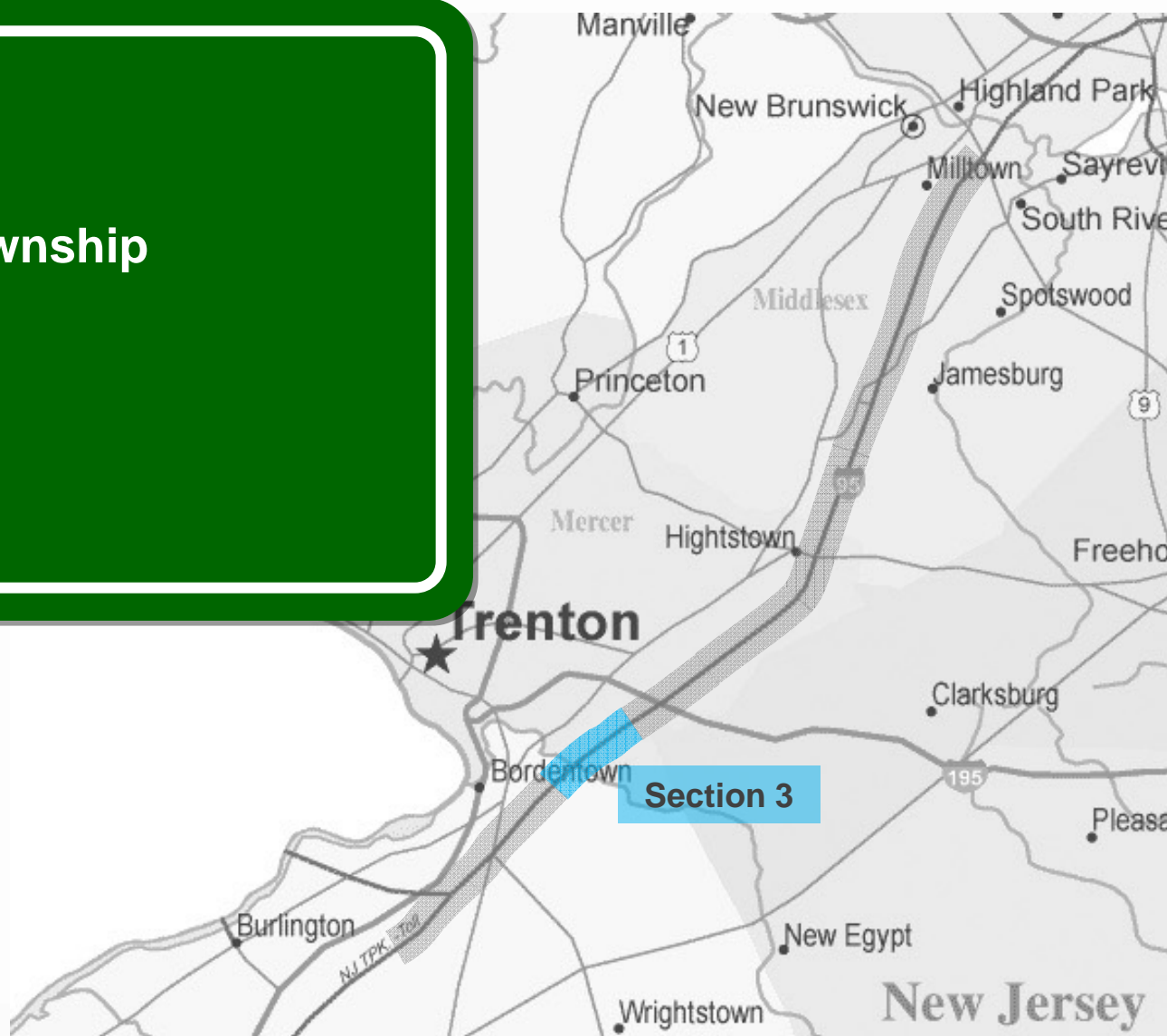
Contract T869.120.202

- 1.5 Miles
- Cost: \$65 million
- Duration: 42 months
- Advertise/Bid: 4Q 2009
- 2 Local Road Bridges over TPK
- 35,000 SF of Retaining Wall
- 280,000 CY of Earthwork
 - Soil consolidation



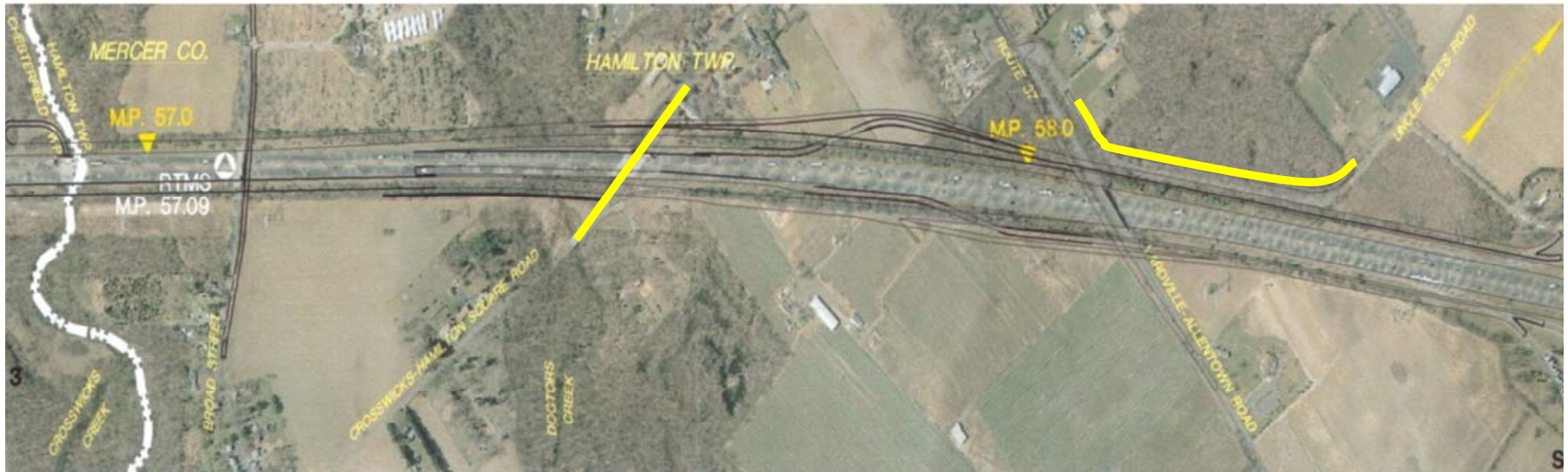
Section 3

- Mercer County
- Robbinsville Township
- 3 Contracts



Contract T869.120.301

- Cost: \$5 million
- Duration: 12 months
- Advertise/Bid: 1Q 2009
- Uncle Pete's Road
 - Local Utility Relocation
 - Uncle Pete's Road
 - Crosswicks-Hamilton Square Road
- 15,000 CY of Earthwork



Contract T869.120.302

- 3.2 Miles
- Cost: \$170 million
- Duration: 42 months
- Advertise/Bid: 2Q 2010
- Service Area 6S
- 3 Local Road Bridges over TPK
- 4 Mainline Bridge Structures
- 2 Culvert Extensions
- 2 New Ramp Structures
- 150,000 SF of Retaining Wall
- 520,000 CY of Earthwork



Contract T869.120.303

- 3.2 Miles
- Cost: \$90 million
- Duration: 36 months
- Advertise/Bid: 4Q 2010
- Service Area 6N
- 2 New Ramp Structures
- 90,000 SF of Retaining Wall
- 430,000 CY of Earthwork



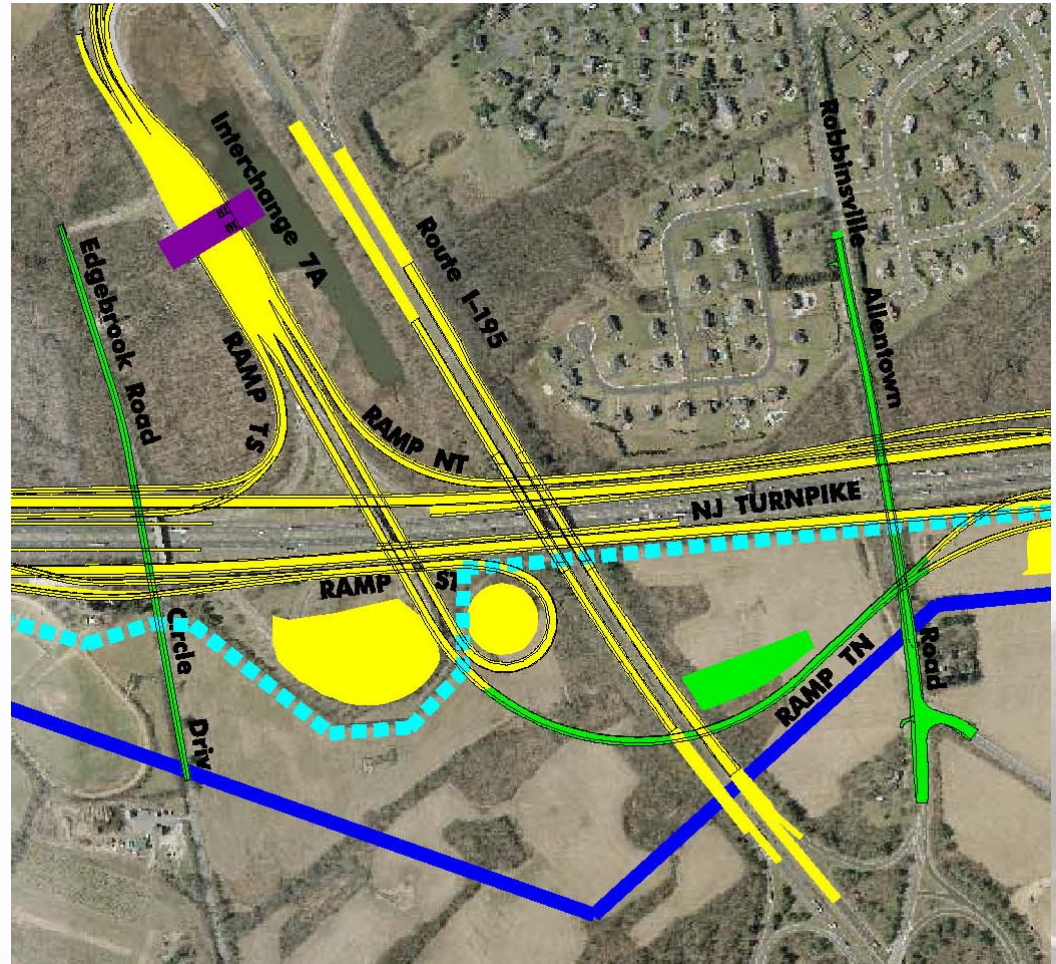
Section 4

- Mercer County
- Robbinsville Township
- 3 Construction Contracts



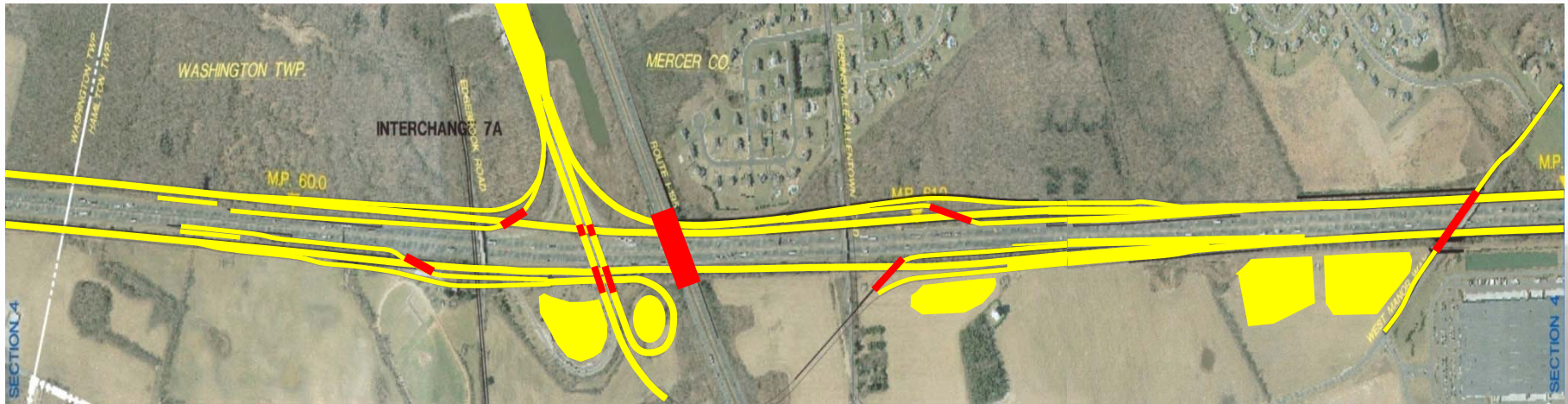
Contract T869.120.401

- Cost: \$55 million
 - Duration: 21 months
 - Advertise/Bid: 1Q 2009
-
- Interchange 7A
 - 1 new Ramp TN
 - 2 Local Road Bridges over TPK
 - 300,000 CY of Earthwork



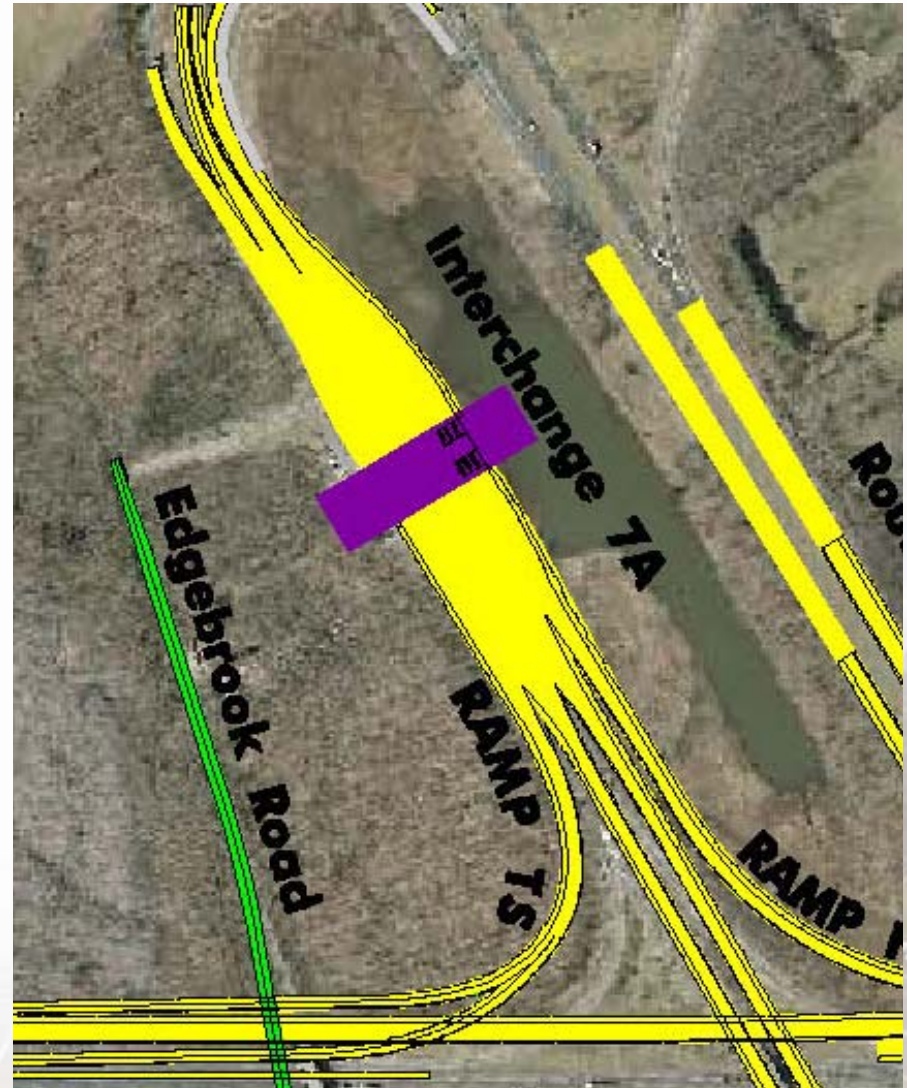
Contract T869.120.402

- 2.3 Miles
- Cost: \$180 million
- Duration: 36 months
- Advertise/Bid: 4Q 2010
- Interchange 7A (8 New Ramps)
- New I-195 Bridge over TPK
- 1 Local Bridge over the TPK
- 70,000 SF of Retaining Wall
- 140,000 CY of Earthwork



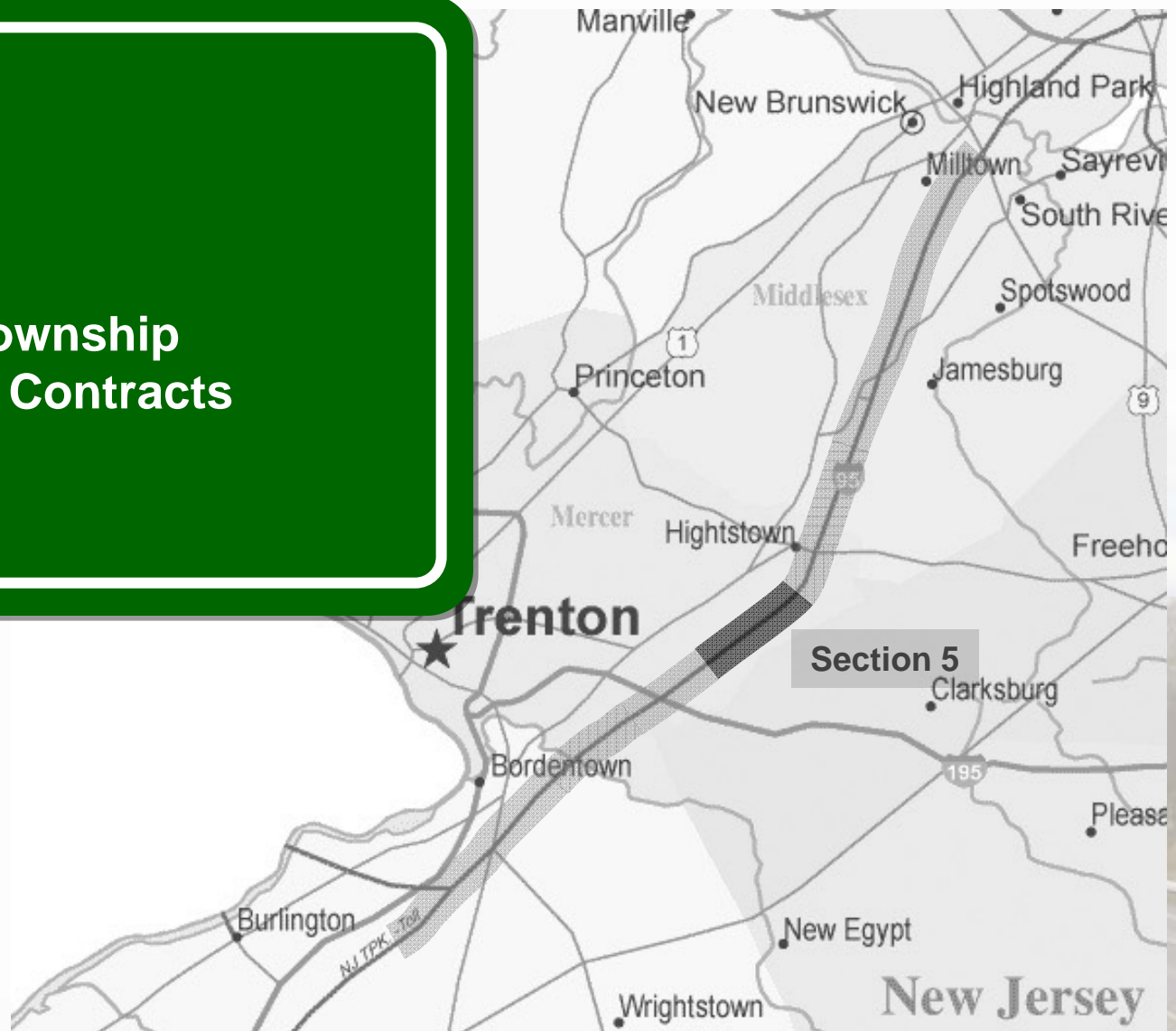
Contract T869.120.403

- Cost: \$5 million
 - Duration: 18 months
 - Advertise/Bid: 1Q 2010
-
- Interchange 7A Toll Plaza
 - 3 New Toll Booths
 - Widened Toll Plaza
 - Tunnel Extension



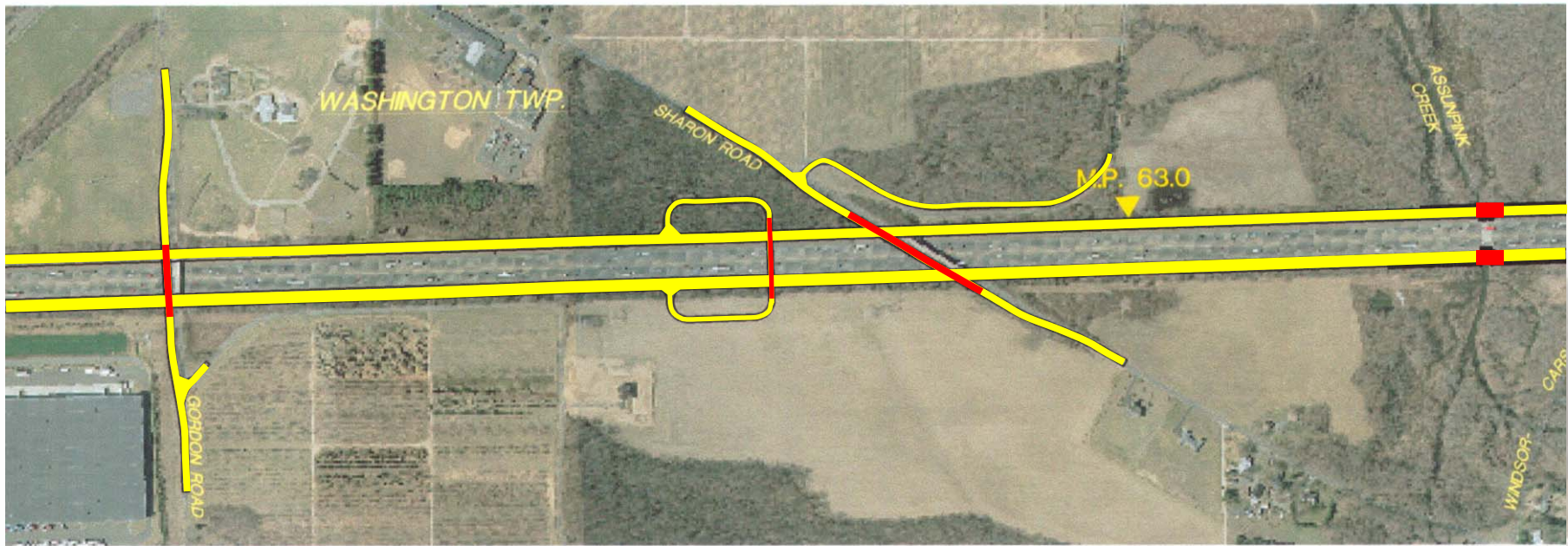
Section 5

- Mercer County
- Robbinsville Township
- 3 Construction Contracts



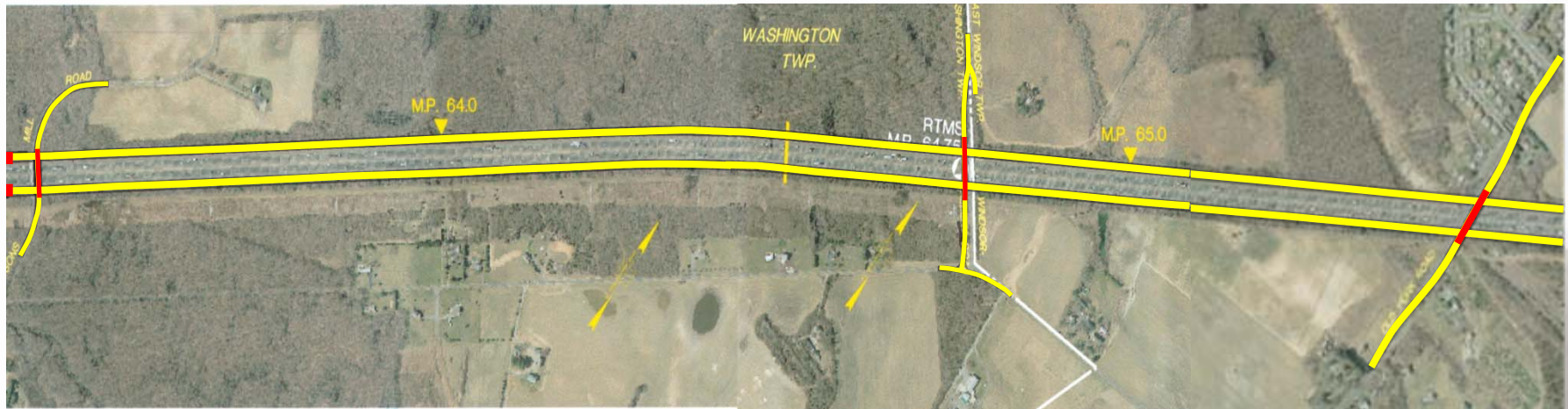
Contract T869.120.502

- 1.4 Miles
- Cost: \$65 million
- Duration: 32 months
- Advertise/Bid: 2Q 2010
- 2 Local Road Bridges over TPK
- 2 Culvert Extensions
- 1 U-Turn
- 40,000 SF of Retaining Wall
- 300,000 CY of Earthwork



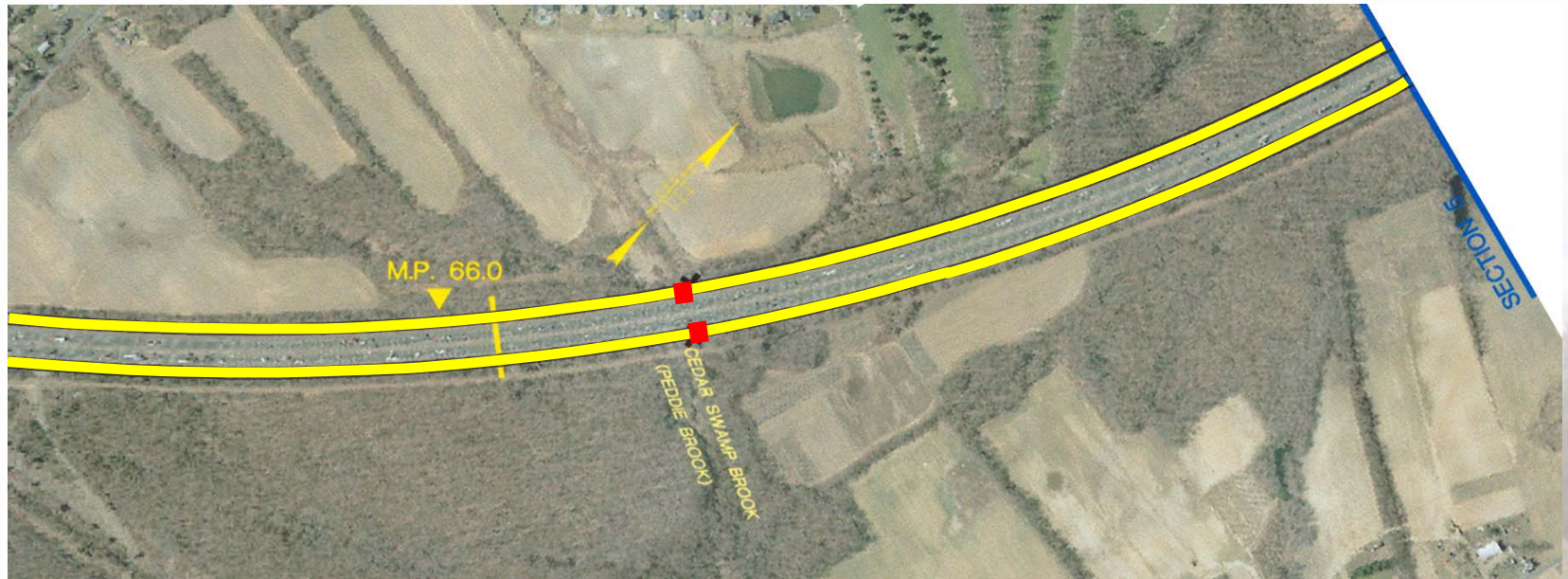
Contract T869.120.503

- 2.2 Miles
- Cost: \$80 million
- Duration: 36 months
- Advertise/Bid: 3Q 2010
- 3 Local Road Bridges over TPK
- 2 Culvert Extensions
- 9,000 SF of Retaining Wall
- 432,000 CY of Earthwork



Contract T869.120.501

- 1.0 Miles
- Cost: \$35 million
- Duration: 30 months
- Advertise/Bid: 1Q 2009
- 2 Culvert Extensions
- 20,000 SF of Retaining Wall
- 150,000 CY of Earthwork



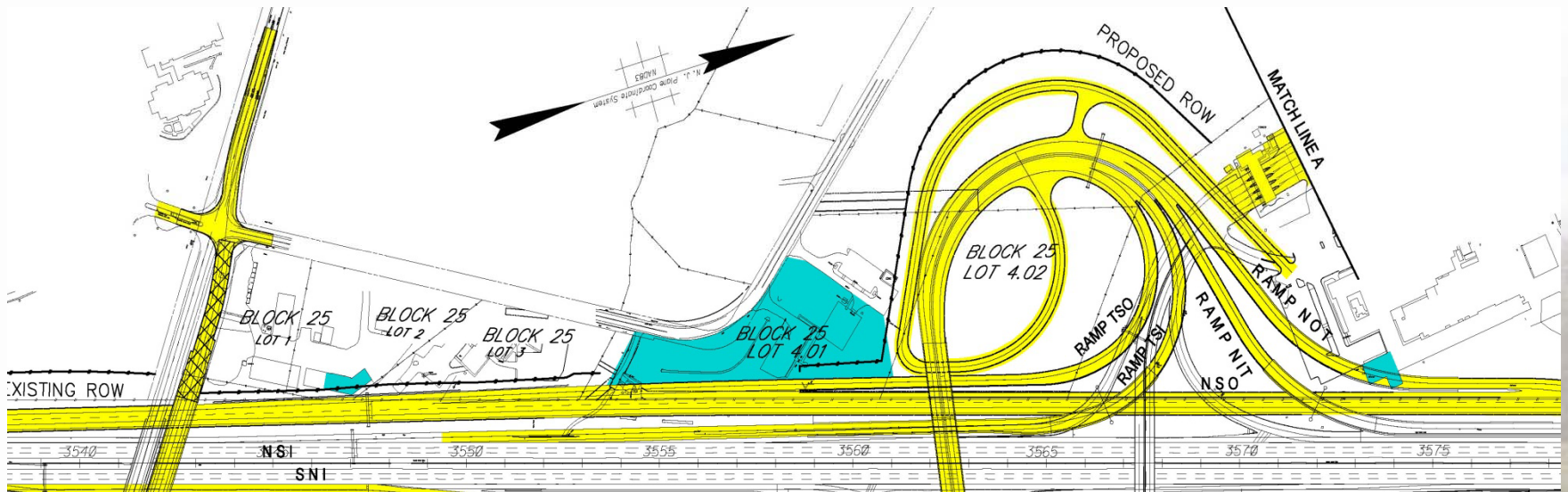
Section 6

- Mercer County
- Township of East Windsor
- 5 Construction Contracts
- Interchange 8



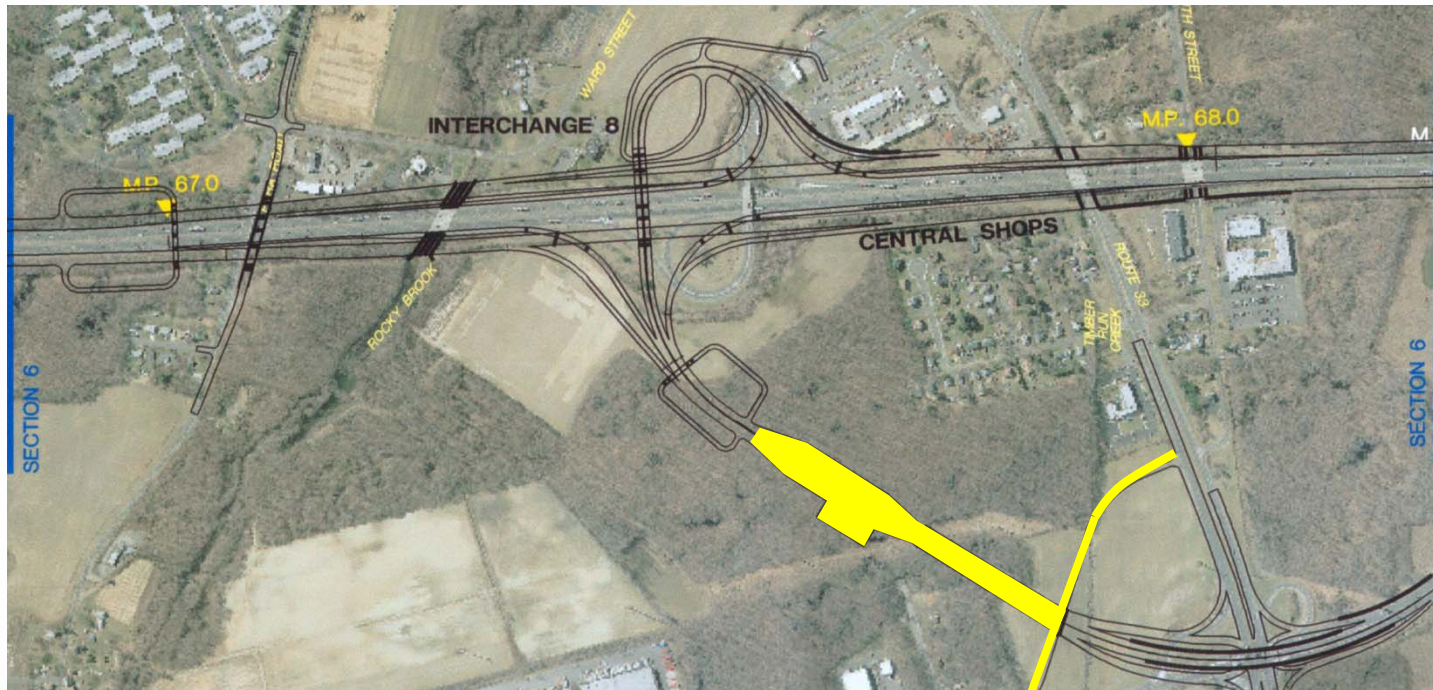
Contract T869.120.602

- Cost: \$10 million
- Duration: 24 months
- Advertise/Bid: 1Q 2010
- Interchange 8
- Building Relocations
- Utility Relocations



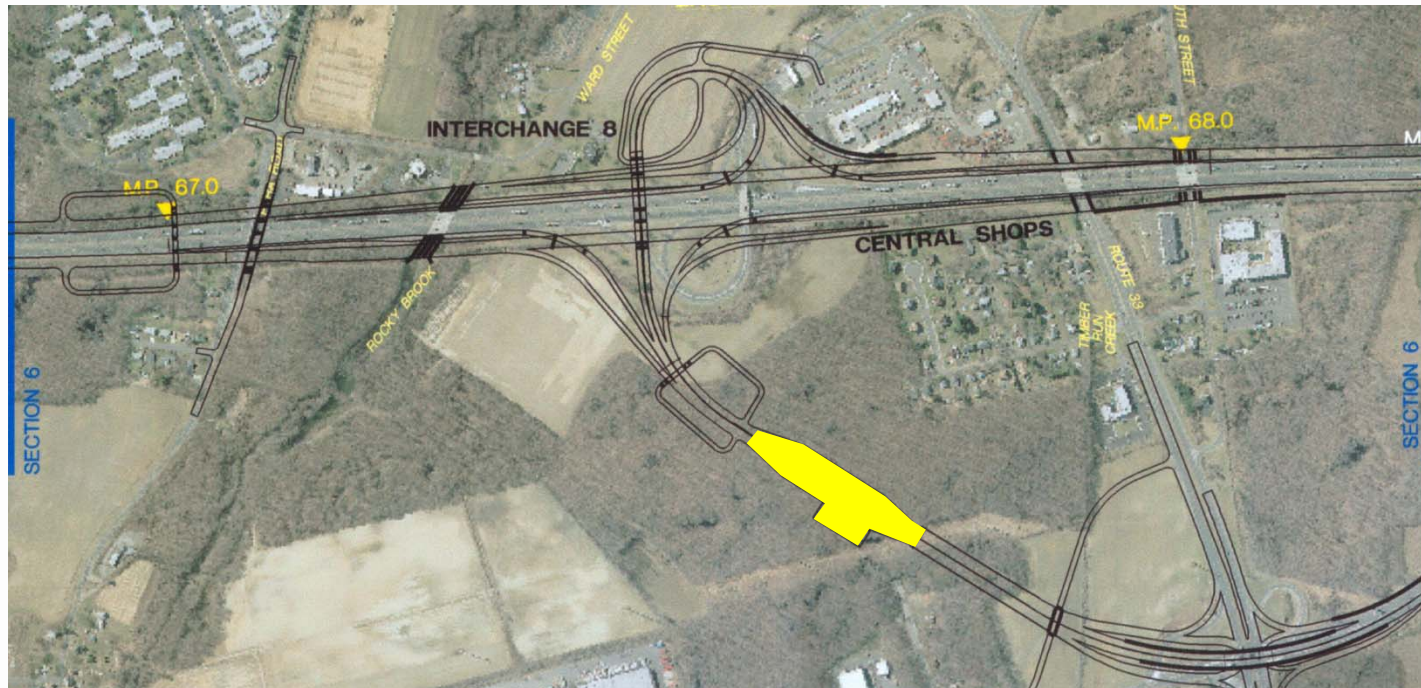
Contract T869.120.601

- Cost: \$25 million
- Duration: 12 months
- Advertise/Bid: 1Q 2009
- Interchange 8
- Advanced Earthwork for New Toll Plaza & Milton Road
- 30,000 SF of Retaining Wall
- 435,000 CY of Earthwork
 - Soil Consolidation



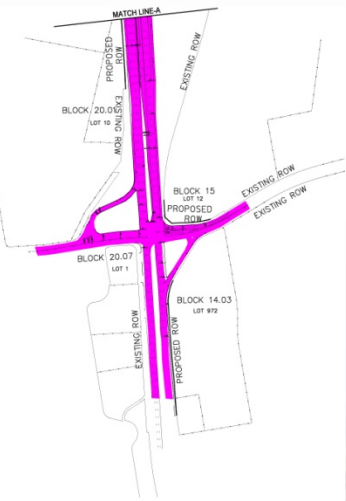
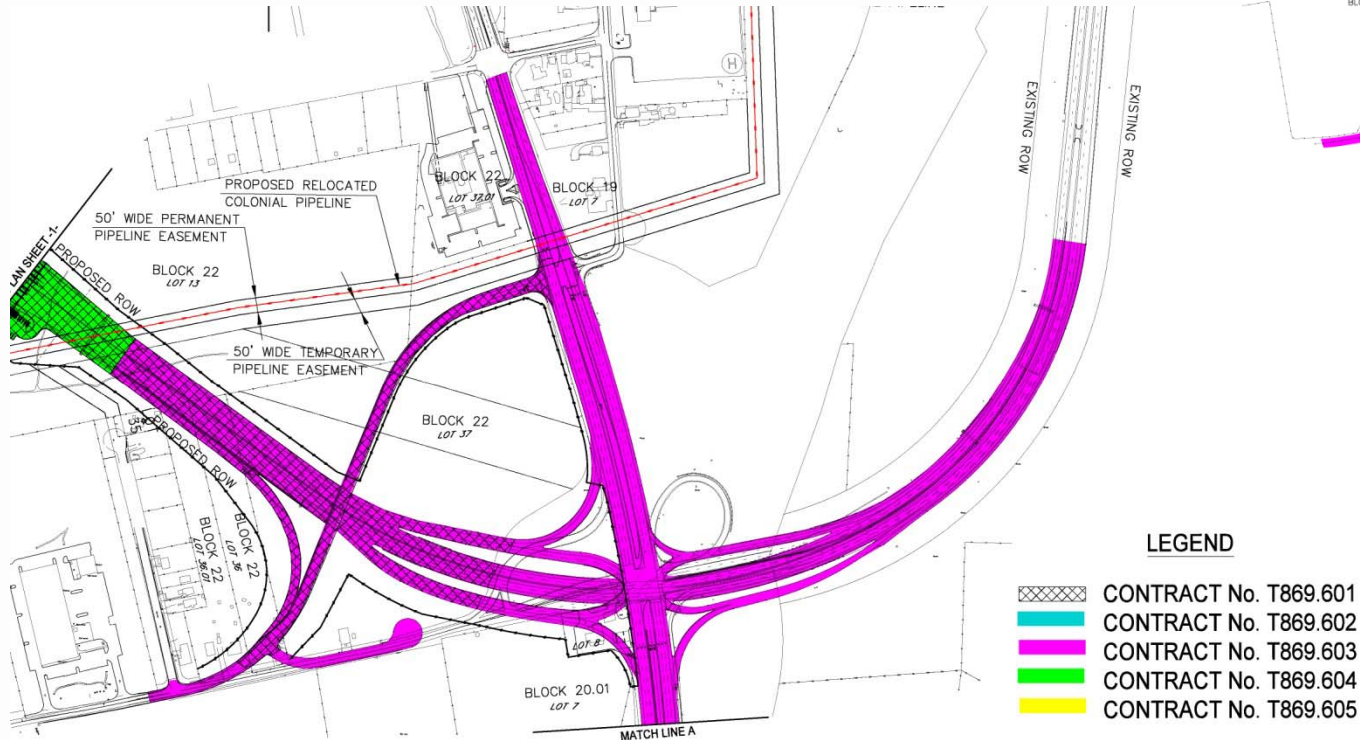
Contract T869.120.604

- Cost: \$20 million
- Duration: 24 months
- Advertise/Bid: 3Q 2010
- New Toll Plaza
 - 10 Toll Lanes
 - New Facility Building



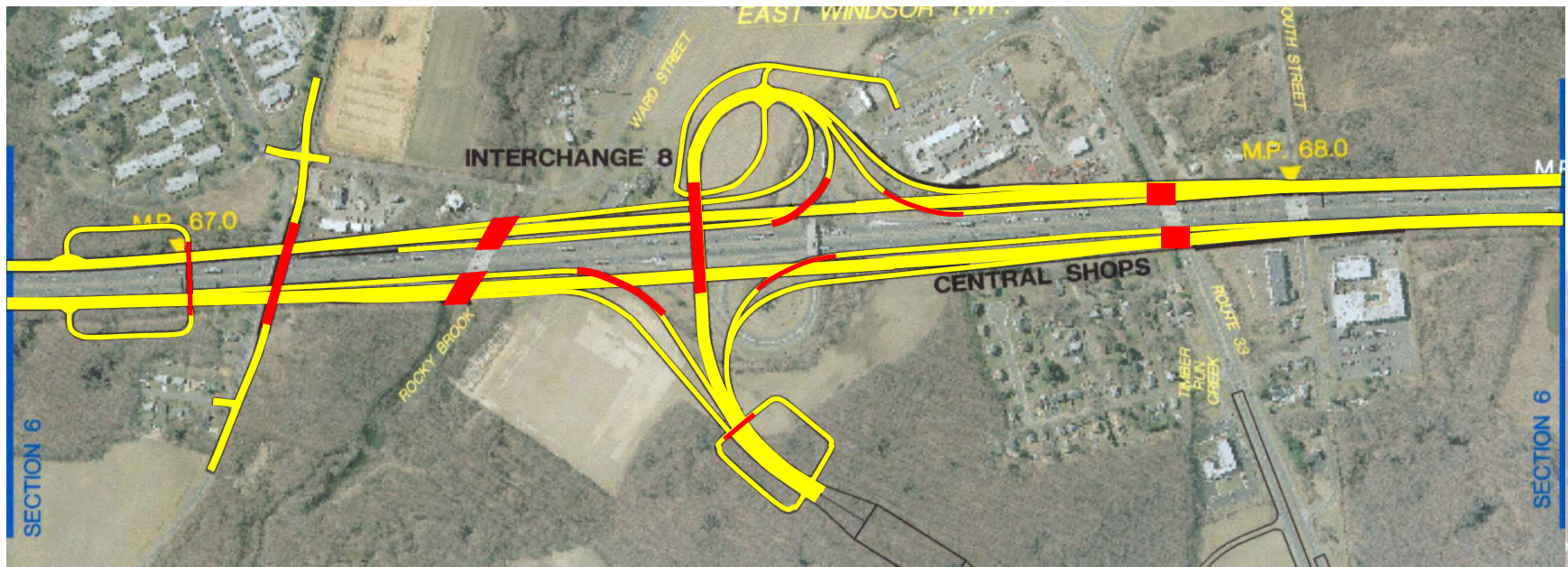
Contract T869.120.603

- Cost: \$60 million
- Duration: 24 months
- Advertise/Bid: 1Q 2010
- New SPUI
- New Bridge over Route 33
- 24,000 SF of Retaining Wall
- 150,000 CY of Earthwork



Contract T869.120.605

- 1.5 Miles
- Cost: \$165 million
- Duration: 36 months
- Advertise/Bid: 3Q 2010
- Interchange 8 (5 New Ramps)
- 1 Local Road Bridge over the TPK
- 2 Culvert Extensions
- 2 U Turn
- 150,000 CY of Earthwork



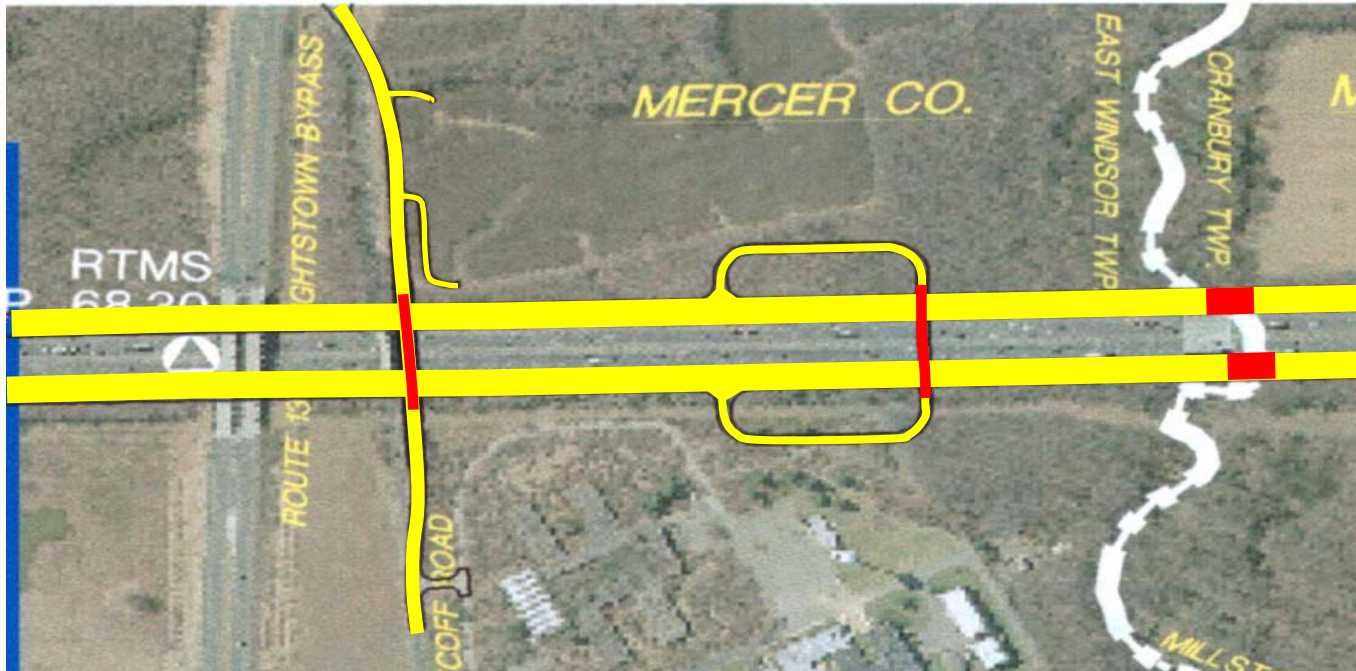
Section 7

- Mercer & Middlesex Counties
- Township of East Windsor & Township of Cranbury
- 3 Construction Contracts



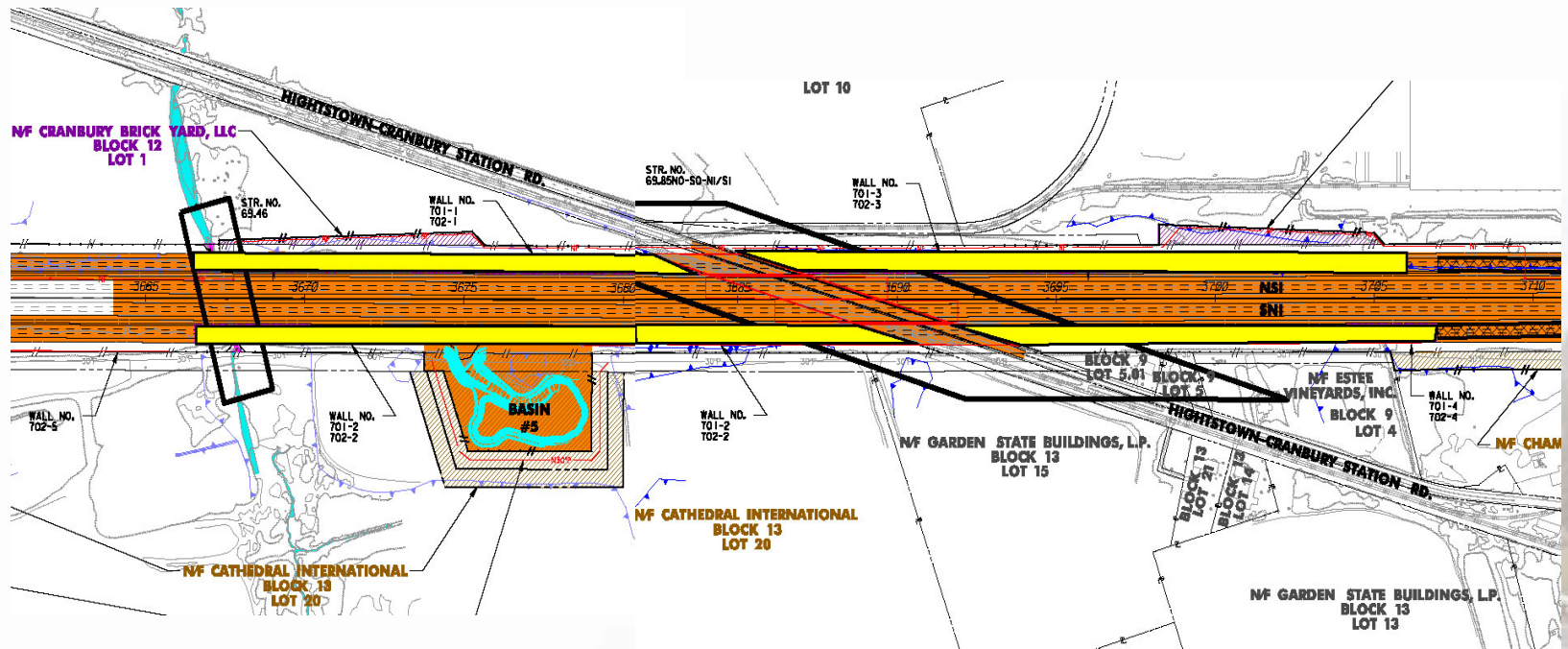
Contract T869.120.703

- 0.5 Miles
- Cost: \$30 million
- Duration: 32 months
- Advertise/Bid: 1Q 2011
- 1 Local Road Bridge over TPK
- 2 Culvert Structures
- 1 U-Turn
- 20,000 SF of Retaining Wall
- 80,000 CY of Earthwork



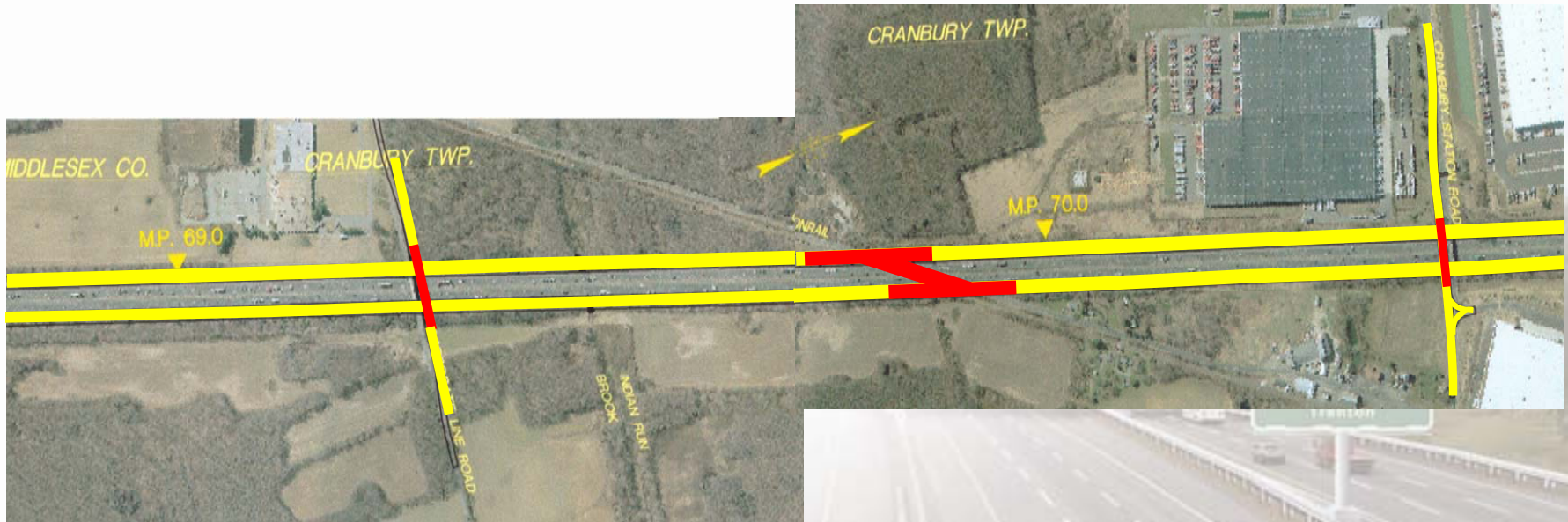
Contract T869.120.701

- 0.8 Miles
- Cost: \$35 million
- Duration: 18 months
- Advertise/Bid: 2Q 2009
- 2 Culvert
- 90,000 SF of Retaining Wall
- 150,000 CY of Earthwork
 - Soil Consolidation



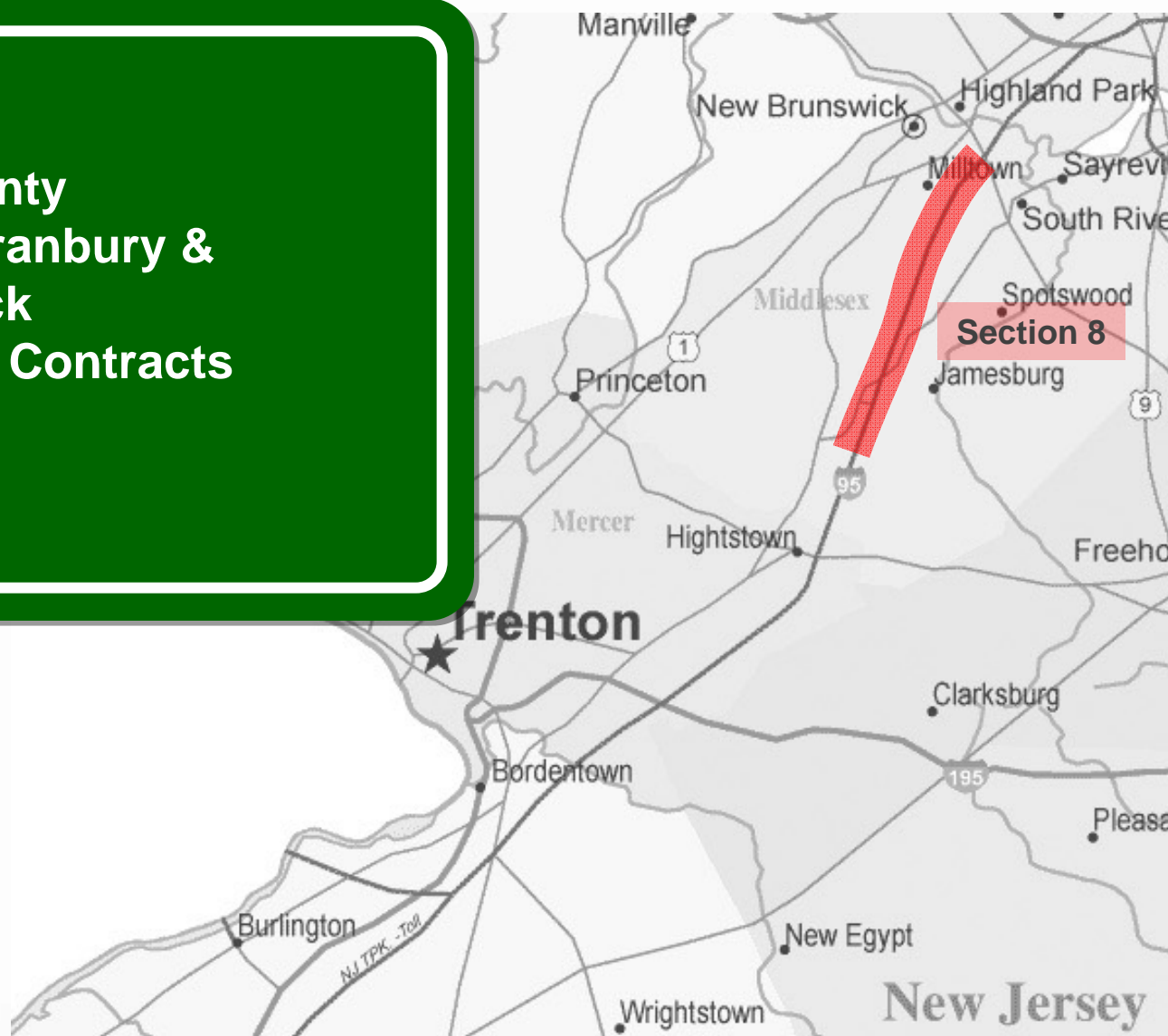
Contract T869.120.702

- 1.7 Miles
- Cost: \$110 million
- Duration: 48 months
- Advertise/Bid: 1Q 2010
- 2 Mainline Bridge Structures
- 2 Local Road Bridges over TPK
- 40,000 SF of Retaining Wall
- 170,000 CY of Earthwork



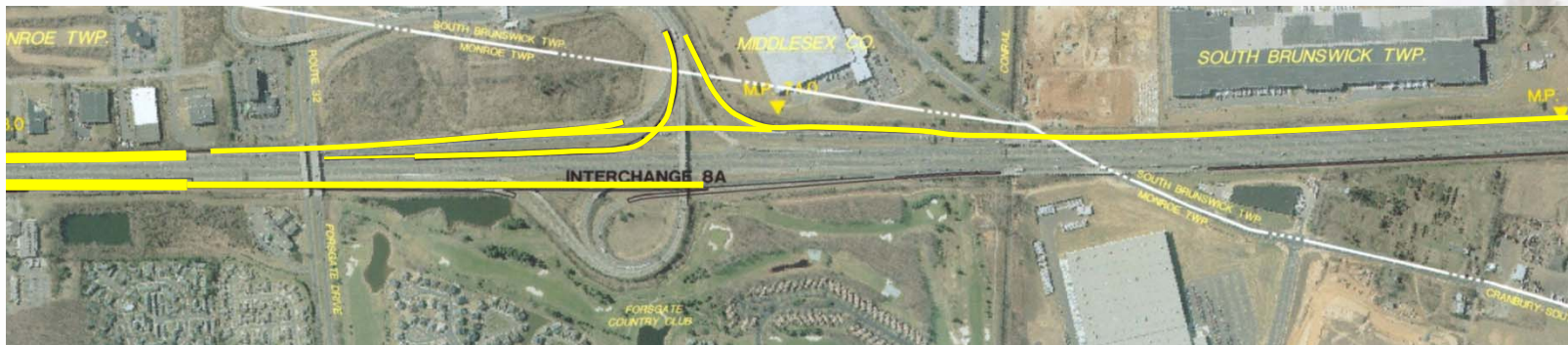
Section 8

- Middlesex County
- Township of Cranbury & South Brunswick
- 3 Construction Contracts



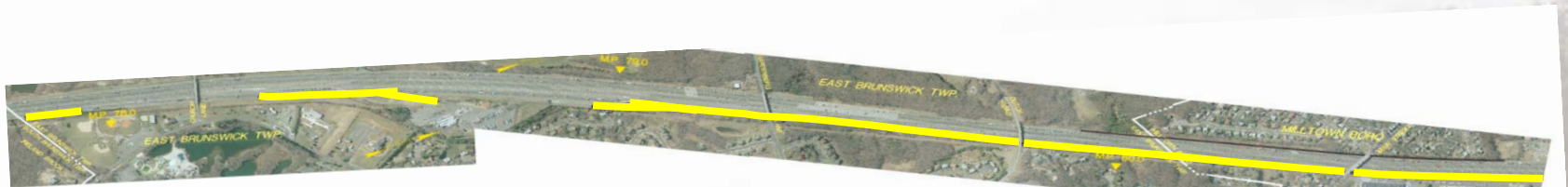
Contract T869.120.803

- 12 Miles
- Cost: \$155 million
- Duration: 36 months
- Advertise/Bid: 3Q 2011
- Interchange 8A (2 New Ramps)
- 120,000 SF of Retaining Wall
- 500,000 CY of Earthwork
- Extensive MPT (temp. merge/diverge)

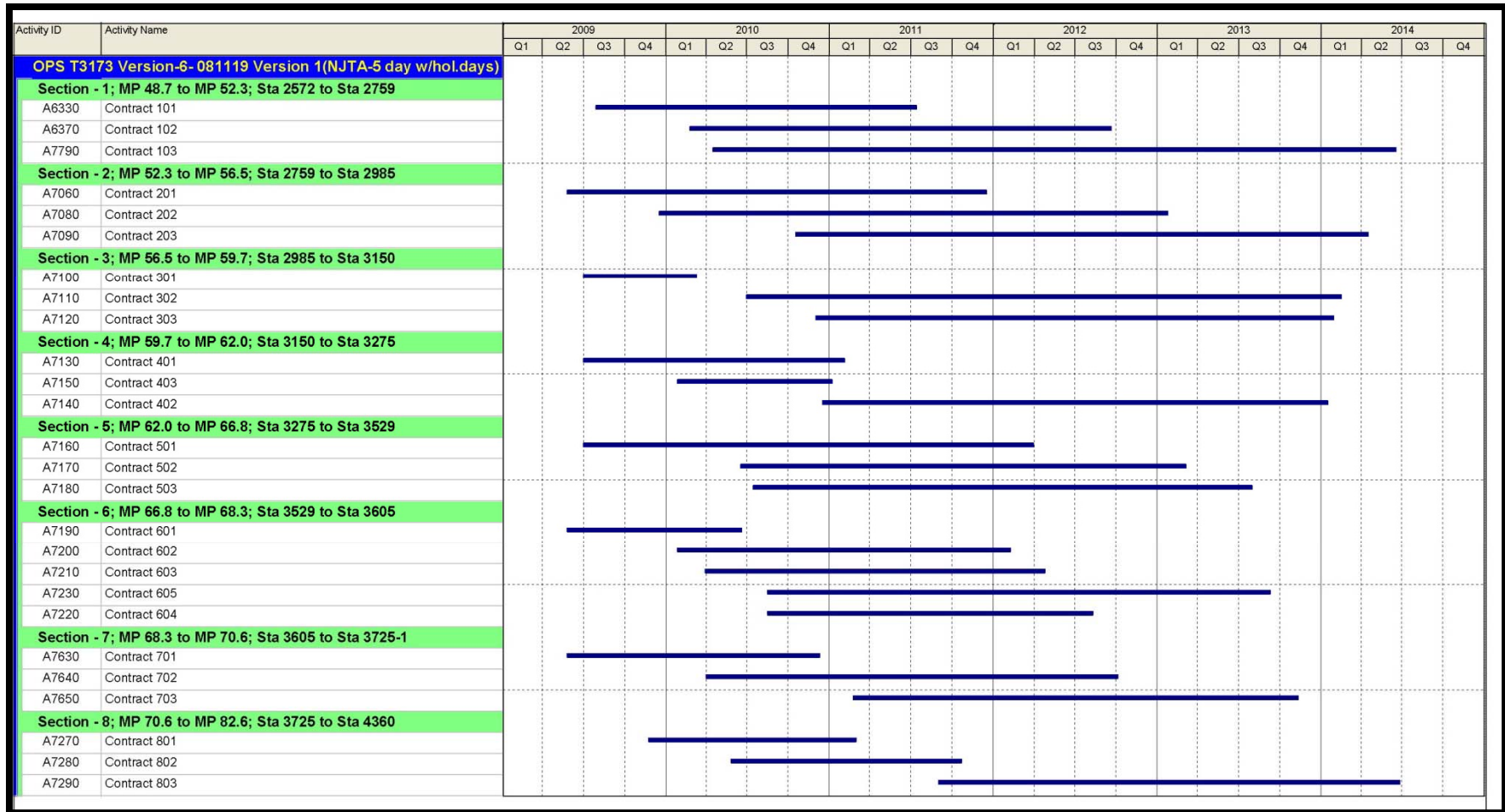


Contract T869.120.801

- 9.5 Miles
- Cost: \$15 million
- Duration: 18 months
- Advertise/Bid: 4Q 2009
- Widen Northbound Shoulder
- New Drainage structures
- 80,000 CY of Earthwork



Contract Schedule *



* Full size copy included in handout

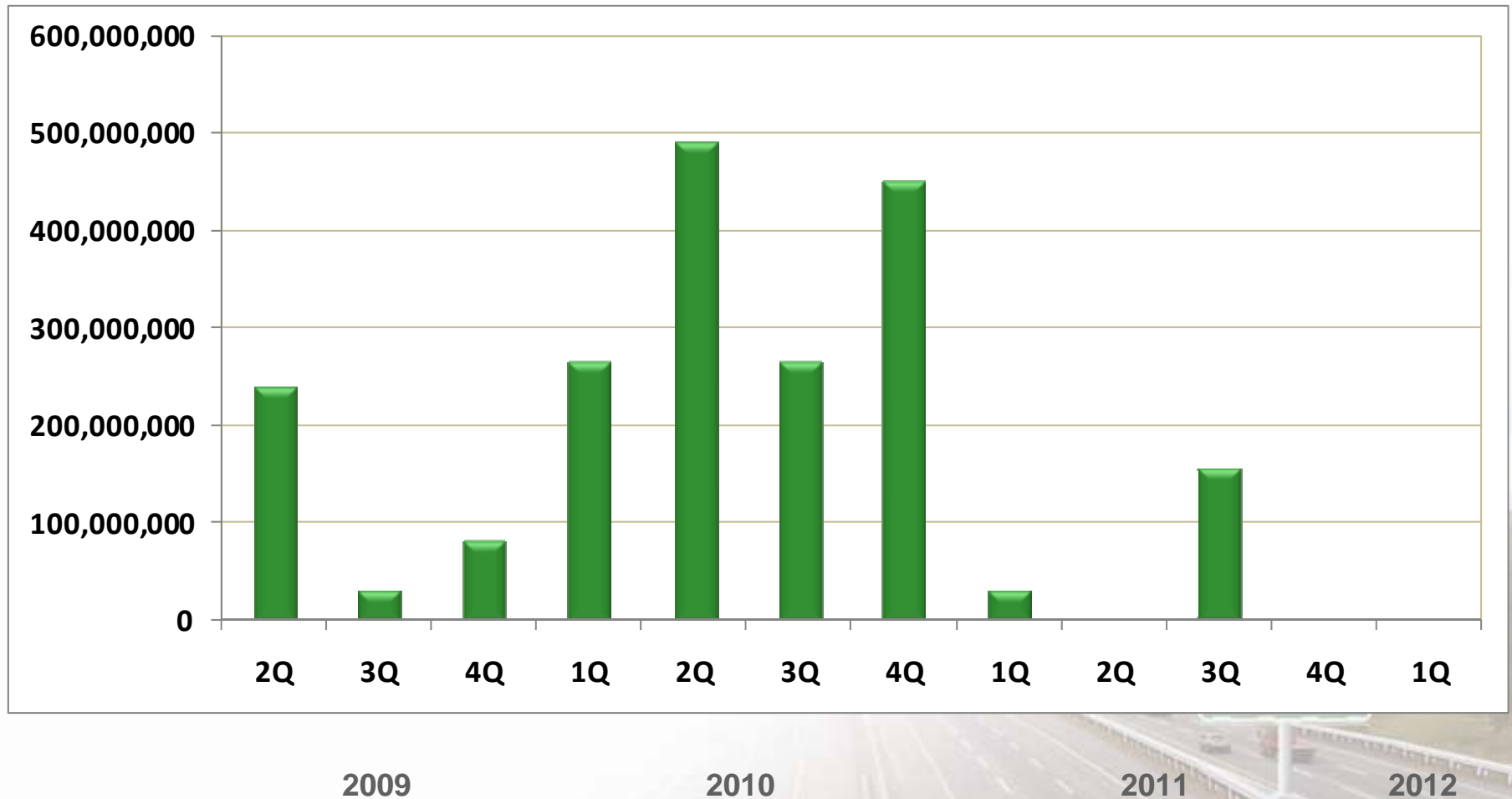
Proposed Contract Award Schedule *

NJTA Interchange 6 to 9 Widening					
Contract Number				Award Schedule	Contract Cost (in Millions)
T 869.120.201 T 869.120.301 T 869.120.401 T 869.120.501 T 869.120.601 T 869.120.701	80 5 55 35 25 35	Million Million Million Million Million Million	Highway/Bridge Local Road/Utilities Bridge Earthwork Earthwork Earthwork	2nd Quarter 2009	235
T 869.120.101	30	Million	Highway	3rd Quarter 2009	30
T 869.120.801 T 869.120.202	15 65	Million Million	Highway Highway/Bridge	4th Quarter 2009	80
T 869.120.102 T 869.120.403 T 869.120.602 T 869.120.603 T 869.120.702	80 5 10 60 110	Million Million Million Million Million	Highway/Bridge Toll Booths Buildings SPUI Highway/Bridge	1st Quarter 2010	265
T 869.120.103 T 869.120.302 T 869.120.502 T 869.120.802	210 170 65 45	Million Million Million Million	Interchange 6 Service Area 6N Highway/Bridge Bridge	2nd Quarter 2010	490
T 869.120.503 T 869.120.604 T 869.120.605	80 20 165	Million Million Million	Highway/Bridge Toll Plaza Interchange 8	3rd Quarter 2010	265
T 869.120.203 T 869.120.303 T 869.120.402	180 90 180	Million Million Million	Interchange 7 Highway/Bridge Interchange 7A	4th Quarter 2010	450
T 869.120.703	30	Million	Highway/Bridge	1st Quarter 2011	30
T 869.120.803	155	Million	Interchange 8A	3rd Quarter 2011	155
Total Construction Cost					2,000

* Full size copy included in handout



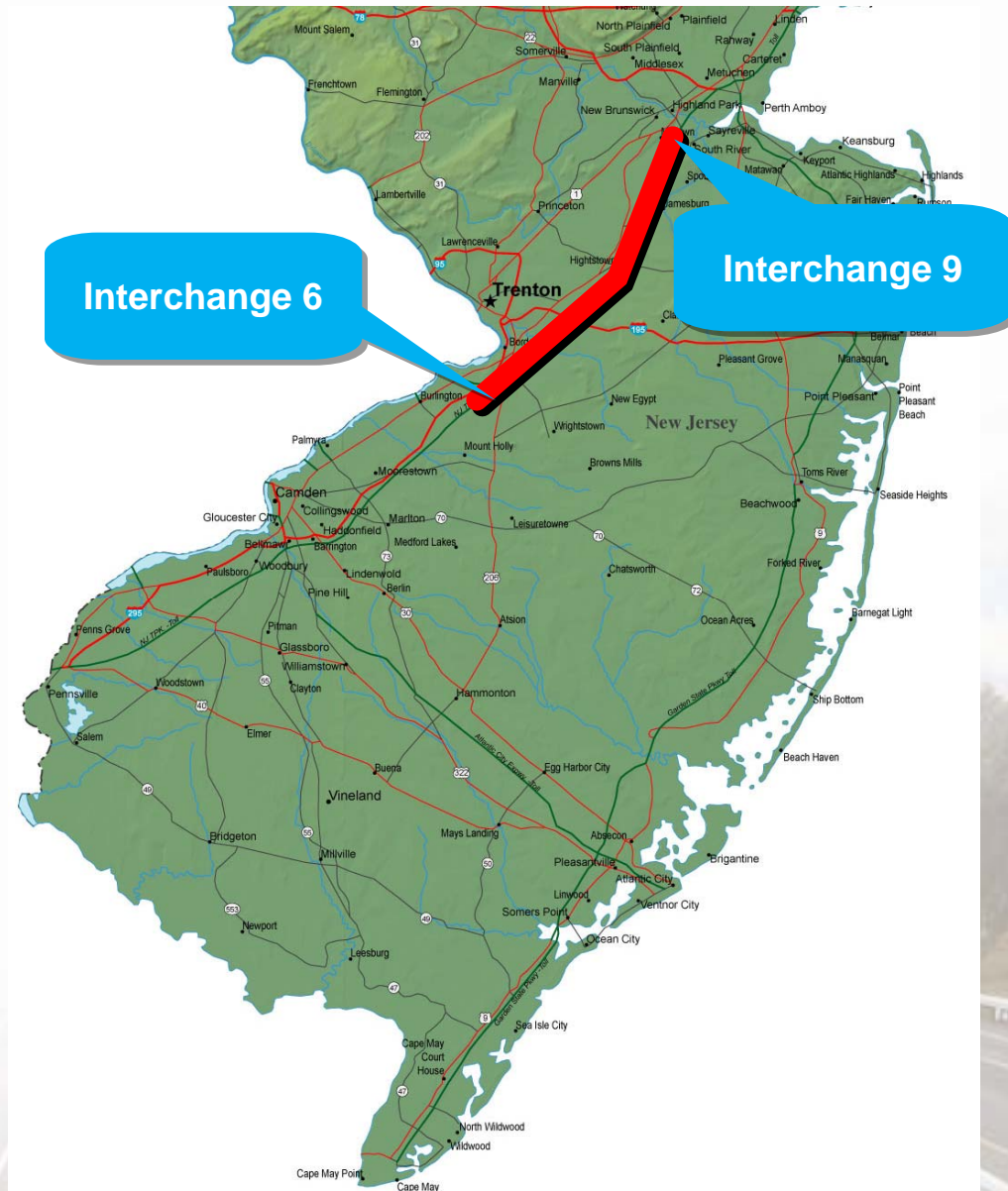
Proposed Contract Award Schedule *



* Full size copy included in handout

Interchange 6 to 9 Widening Program

Questions & Answers



For more information see the Turnpike website
www.state.nj.us/turnpike

Proposed Contract Award Schedule - 2011

NJTA Interchange 6 to 9 Widening

Contract Number			Award Schedule	Contract Cost (in Millions)
T 869.120.703	30	Million	Highway/Bridge	30
T 869.120.803	170	Million	Interchange 8A	170
Total Construction Cost				200



Proposed Contract Award Schedule - 2010

NJTA Interchange 6 to 9 Widening					
Contract Number			Award Schedule	Contract Cost (in Millions)	
T 869.120.102 T 869.120.403 T 869.120.602 T 869.120.603 T 869.120.702	90 5 10 65 120	Million Million Million Million Million	Highway/Bridge Toll Booths Buildings SPUI Highway/Bridge	1st Quarter 2010	290
T 869.120.103 T 869.120.302 T 869.120.502 T 869.120.802	230 190 70 50	Million Million Million Million	Interchange 6 Service Area 6N Highway/Bridge Bridge	2nd Quarter 2010	540
T 869.120.503 T 869.120.604 T 869.120.605	90 20 180	Million Million Million	Highway/Bridge Toll Plaza Interchange 8	3rd Quarter 2010	290
T 869.120.203 T 869.120.303 T 869.120.402	200 100 200	Million Million Million	Interchange 7 Highway/Bridge Interchange 7A	4th Quarter 2010	500
Total Construction Cost					1,620



Proposed Contract Award Schedule - 2009

NJTA Interchange 6 to 9 Widening				
Contract Number			Award Schedule	Contract Cost (in Millions)
T 869.120.201 T 869.120.301 T 869.120.401 T 869.120.501 T 869.120.601 T 869.120.701	90 5 60 40 25 40	Million Million Million Million Million Million	Highway/Bridge Local Road/Utilities Bridge Earthwork Earthwork Earthwork	260
T 869.120.101	30	Million	Highway	30
T 869.120.801 T 869.120.202	15 70	Million Million	Highway Highway/Bridge	90
T 869.120.102 T 869.120.403 T 869.120.602 T 869.120.603 T 869.120.702	90 5 10 65 120	Million Million Million Million Million	Highway/Bridge Toll Booths Buildings SPUI Highway/Bridge	290